

Bromlink



May ~ June 2013

CONTENTS

Volunteer Contacts	2
Dates for your diary / New members	3
President's Report	4
Speaker Presentations for May, June, July	5
Plant of the Month / Shopping centre dates	6
Tillandsia Workshop Information	7
Expo Competition Report and photos	8,9,10,11
Which type of member are you?/ Ads / A note from John	12
Gold Coast Botanical Gardens Anniversary Event	13, 14
Bromeliad Problems – Part 2	15,16, 17
Bus Trip Information	18



EDITORIAL DEADLINE FOR THE NEXT EDITION OF BROMLINK.....

Please have any articles for inclusion to me by July 19th, 2013.
Email address— gcsbs.bromlink@gmail.com

????????????????????????????????

Do you want your Bromlink emailed? Want to hear of the latest succulent or bromeliad news when we do? Why not come and join us at Facebook? If you answered yes to any of those questions, email Shane to be added to the above lists:
GCSBS.President@gmail.com

Statements and opinions expressed in this newsletter are those of the authors and are not necessarily endorsed by the Gold Coast Succulent & Bromeliad Society Inc.

2012-13 Volunteers

www.gcsbs.org.au

Gold Coast Succulent & Bromeliad Society Inc. (GCSBS)
PO BOX 94, Southport Business Centre, Southport QLD 4215



MANAGEMENT COMMITTEE		
<i>President</i>	Shane Weston	gcsbs.president@gmail.com Ph: 0408 247 208
<i>Vice Presidents</i>	Rob Kelly & Dennis Mills	
<i>Secretary</i>	Catherine Smith	gcsbs.secretary@gmail.com
<i>Treasurer</i>	Glenda Hodgson	gcsbs.treasurer@gmail.com Ph: 07 5594 6564
<i>Memberships</i>	Gwen Wayland	gcsbs.memberships@gmail.com
<i>Other Committee Members</i>	Carmon Burke, John Crawford, Julie Hewetson, Monica Mead, Tom Norris, Judy Paterson & Ann Schenk	
VALUED VOLUNTEERS		
<i>Bromlink Editor</i>	Jeanette Henwood	gcsbs.bromlink@gmail.com
<i>Special Projects</i>	John Crawford & Julie Hewetson	
<i>Librarians</i>	Jennifer Laurie & Jan Tobiano	
<i>Bus Trips & Field Days</i>	Glenda Hodgson & Monica Mead & Your name here!	
<i>Sales Co-ordinator</i>	Tom Norris	
<i>Off-Site Plant Displays</i>	Berice Bragg, John Crawford & John & Pam Gaddes	
<i>Barcode Sales</i>	Julie Hewetson	gcsbs.barcodesales@gmail.com
<i>Sales Team</i>	John Crawford, Elizabeth Day, Ruth Dickson, Jeanette Fowler, Eliza Hesse, Julie Hewetson & Carole Solomon	
<i>Sales Stewards</i>	Carmon Burke, Norma Fleet & Helen Mueller	
<i>Sales Support</i>	Graeme Synold, John Gaddes, Rob Kelly	
<i>Meet & Greet</i>	Ann & Harry Schenk	
<i>Refreshments</i>	Janice l'Anson	
<i>Raffles</i>	Rosie Kelly & Lorraine Fox	
<i>Guest Speakers</i>	Kerry Tate	
<i>Publicity</i>	Ann Schenk	
<i>Supplies Table</i>	Marilyn & Tom Rivett (Orchid Den)	
<i>Webmaster</i>	Shane Weston	gcsbs.website@gmail.com
LIFE MEMBERS		
Narelle Aizlewood, Graham Besgrove, John Catlan, Genny Catlan, Wendy Hansen, Mary Nicholson & Neville Ryan		

President's Report

Hi folks and hello Autumn/Winter and cool weather! Whoosh – that is the sound of the last 2 months rushing past. Quite a lot has happened and planning for the society's future meetings and events is still ongoing. I do wish more members would contribute in some way.



Our expo has come and gone; I do hope those that attended enjoyed themselves and you scored some new treasures. There sure were some beauties for sale, on display and even entered in the Popular Vote – but disappointing above all was the low volume of entries in the PV competition. The expo demonstrated one strong theme to me; the dedication of some of our member sellers & volunteers! Great work everyone, like an outstanding effort, from the kitchen helpers to the checkout operators - and then there was Tom, THANK YOU ALL!

We would rate the expo as a success; 218 people through the door (on a horrible day weather-wise) and plant sales of almost \$10k. I hope that the sellers were pleased with the day as well.

The committee did receive a complaint regarding commercial sellers being at the expo. This matter was discussed at the last committee meeting and it was agreed that this commercial seller (as a member) brings to such events as our expo, and even our regular monthly general meetings, plants of such variety that would not necessarily be readily available to members. We do not see these recent releases available from other sellers at our meetings or expos. We realise that some members believe we should purely be by hobbyists for hobbyists only, but the current committee is in agreement on this matter for now.

Many thanks to Joan, Rosie & Barb who showed us some of their favourite things in April. It was great to see a few members get up and have a go – have you? Perhaps your time will come in September when our AGM is held and a new committee will be required. I believe that some of the current committee members may not re-stand – so what happens if no one puts their hand up?

Plants of the Month for May are: Bromeliad Intergenerics, Guzmania & any Succulent, and for June they will be: Quesnelia, Tillandsia & any Succulent. Please bring in yours to show and tell; you never know you may win a prize....! But I say this each month and very few do...go on make me a liar!

Shane Weston GCSBS.President@gmail.com T: 0408 247 208

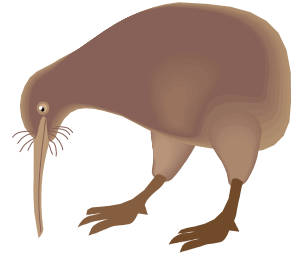
♪ A special get well soon wish for Kerry Tate who is recovering quite well from a very serious illness, and also to those other members who may not be feeling the best right now. Looking forward to seeing you all back at a meeting in the very near future.

UPCOMING SPEAKER PRESENTATIONS & MEETING EVENT PROGRAMS

MAY general meeting – Saturday, 25th

Main event: “Kia Ora from New Zealand”

Members who attended the Cool Broms Australasian Bromeliad Conference in March this year will show us and discuss the highlights of this outstanding event in New Zealand – including summaries of the impressive line up of local, Aussie and other international speakers, garden tours and some sight-seeing. This is an ideal opportunity for members who could not attend the conference to see how the Kiwis do it.



Feature event: “Intergeneric Bromeliads” with Kerry Tate

Kerry will give an update on some of her most interesting intergeneric bromeliads – including some of her own creations and those of others. Members are invited to bring in some of their own to show and tell.



JUNE general meeting – Saturday, 22nd

Main event: “Treasures of Colombia” with Bruce Dunstan

Bruce is a seasoned traveller and explorer extraordinaire of rare and obscure delights growing in their natural habitat. Colombia is a South American country rich in its diversity of many species of the Bromeliaceae family – many of which have yet to be described and published. Admire the climbing skills and effort by Bruce to capture the beauty of those special broms growing epiphytically. Hear about the perilous adventures along the way.

Feature event: “Sublime Succulents” with Kathleen Henderson

Cactus Kate will show and discuss a range of succulent plants we rarely see or grow. Learn some propagation tips and how to keep them looking good. Be inspired by some creative, potted arrangements.

JULY general meeting – Saturday, 27th

Main event: “All about Alcantarea” with John Bythe

John Bythe lives in Brisbane. His extreme passion for the genus Alcantarea has led him constantly up garden paths, searching for and collecting many different species, cultivars and varieties. A relative newbie, John’s enthusiasm is refreshing and his knowledge inspirational.



Feature event: “The Condon Collection” with Bruce Condon

Bruce and Heather Condon have not grown bromeliads for as long as many other members, but in a short time they have established a huge collection landscaped under a massive shade structure on their hinterland property. Bruce will show us some of his favourite Vriesea and Neoregelia.

~~~~~



## Plants of the Month.

Members are encouraged to bring their specimens of these plants to the applicable month's meeting for brag/show and tell. They do not have to be in flower - we also grow specifically for foliage!

|           |                                                              |
|-----------|--------------------------------------------------------------|
| May       | Bromeliad Intergenerics, Guzmania & any Succulent            |
| June      | Quesnelia, Tillandsia & any Succulent                        |
| July      | Dyckia, Hechtia, Puya & any Succulent                        |
| August    | Aechmea, Orthophytum & any Succulent                         |
| September | Billbergia, Vriesea & any Succulent                          |
| October   | Canistrum, Neoregelia, Nidularium & any Succulent            |
| November  | Any Bromeliad genus not previously featured & any Succulent. |

~~~~~

2013 Shopping Centre Sales Dates ~ Subject to change

July	11, 12, 13	Mudgeeraba Shopping Village	
August	8, 9, 10	Tweed Mall	
October	10, 11, 12	The Pines Shopping Centre - Elanora	
Oct	31	Nov 1, 2	Southport Park Shopping Centre
November	7, 8, 9	Mudgeeraba Shopping Village	

2013 TILLANDSIA WORKSHOP (Sponsored by the BSQ)

Sunday 26 May 2013, 9am to 4pm

Venue: Newmarket State Primary School. Cnr Banks St and Enoggera Rd, Newmarket - car park entry off Banks St.

Featured Guest:

Andrew Flower; who is the principal of Anwyl Bromeliads in NZ. Andrew specialises in production and supply of Tillandsia species and hybrids to a worldwide market.

Program:

8-9am set up, welcome and re-establish acquaintances

9am Andrew Flower Presentation

10.30am - morning tea

1045-3.30pm - Workshop presentations- your input is

welcomed. Please advise if you will be bringing plants for discussion or wish to give a short presentation in the workshop sessions.

12.30pm - Lunch and plant sales

2-3.30pm - Show and Tell review - panel discussion – pollinating tillandsia, seed raising, mounting tills

3.30pm - Wrap up sales and Silent Auction

4pm Finish and clean up.

Special Twists: First Dibs Raffle - Your \$3 entry fee gives you a lucky number. Five numbers will be drawn at 30 second intervals to give the lucky five first choice of 1 plant at the sales table before the general sales opening.

Silent Auction: We will have an assortment of rarer plants for auction. This is “silent” as each bidder adds their lucky number ID and bid to a sheet beside each plant. 50% of proceeds go to the “donor” and 50% to the BSQ.

Sales: The plant sales will be run in line with normal BSQ monthly meetings. Plants need BSQ barcode. A 10% commission goes to the BSQ.

BBQ lunch (gold coin donation). Morning and afternoon teas will be supplied.

To assist catering please register with John Olsen

T: 07 38560265 E: president@bromsqueensland.com.au



SOLUTION TO CROSSWORD for Lesley

Across - 3. CLIP, 7. BIAS, 10. MILLII, 11. HYBRIDS, 12. AM, 13. TB, 15. EMU, 16. BULGE, 17. EARS, 18. SPORE, 19. BORON, 21. PB, 23. NOTCH, 25. DISPEL, 27. OVATA, 28. PITH, 29. ACIDIC, 31. HUERNIA, 33. DR, 35. HOPS, 37. HENDRA, 39. STYLUS, 41. SCOTCHTHISTLE.

Down – 1. IMMERSED, 2. GLAUCOUS, 3. CIA. 4. LIMBS 5. PHYLLOCLADE 6. OBREGONIA 7. BITES 8. ID 9. ASTROPHYTUM 14. BS 20. NO 22. GLOCHID 24. TOPIARY 26. INC. 29. APHIDS. 30. DESERT 32. NESTS 34. DISKS 36. PH 38. ASH 40. LEE



OUR EXPO POPULAR VOTE COMPETITION

Congratulations to our winners in the recent competition. You will find photos of some of the gorgeous entries in colour in following pages. A plant which drew many comments of admiration won the Kathleen Henderson Succulent trophy – an Australian native - *Dischidia nummularia*, which was superbly grown by Kathleen herself.



The judge's choice winner was a very beautifully marked *Quesnelia* 'Rafael Oliveira', belonging to Shane. The popular vote plant, voted overall by members as the plant they would most like to have in their collection, was an impressive *Aechmea* 'Loie's Pride', exhibited by Len and Olive.



As well as these trophy winners, other members showed off some lovely plants. Barb Adams entered not only succulents, but a very attractive miniature neo, 'Domino'. Barb S, Berice, Ruth and her silver ball cactus (well-grown and commented on by the judges!), John with his well-grown dyckias, Janette with her *quesnelia marmorata* specimen plant and Carmon with her succulent bowl gardens, all deserve a mention.



On the negative side though, I was disappointed by the number of entries. The competition could have been better supported. We had 47 total entries and these plants were submitted by only twelve of our members. What happened?

Let's show some spirit and get involved in the next competition. If every member who attends regularly entered only two plants each, we would have more than 100 lovely plants to look at and admire.

Why not start planning now? Have a look at your plants and choose two with potential – you never know what might happen.

Jeanette Henwood
Show Steward

Many thanks to Shane for taking registrations on Friday night and to Kathleen for her outstanding help and attention to detail with plants and also to Genny for help with the points tallying. Thanks also to Geoff and Helen Barlow, for printing the beautiful ribbons, embossed with the society logo. Many hands, as they say...

**EXPO
2013
MOMENTS**



*Setting Up
Friday night and
Saturday morning*



Great display!

Some had it easy.



Nice Plants!



Buyers were consistent all day



All types of plants

Shenanigans while queuing for a cuppa?





Popular Vote



Our Popular Vote organisers ☺



What would we do without the checkout team...and that is Eliza trying to hide!



Our display at the BSQ event that weekend. (Many thanks to Greg & Narelle A.).

Classify Yourself

Are you an active member, the kind that would be missed,
Or are you just contented that your name is on the list.

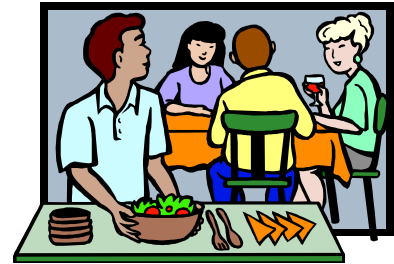
Do you attend the meetings, and mingle with the flock,
Or do you stay at the back and criticise and knock?

Do you take an active part to help the work along,
Or are you satisfied to be a person who just belongs?

Do you work on committees, to see that there is no trick,
Or leave the work to just a few and talk about the 'clique'?

So come to meetings often and help with hand and heart.
Don't just be a member, but take an active part.

Think it over now, you know right from wrong,
Are you an active member, or do you just belong?



(Based upon: Bromeletter publication May/June 1983.)

WHOLESALE BROMELIADS of AUSTRALIA, THE POCKET

(Near Mullumbimby, Northern NSW)

Large range of bromeliads - Agents for Deroose, Exotic Plant of Belgium
and Andrew Maloy's KIWI COLLECTION VRIESEAS.

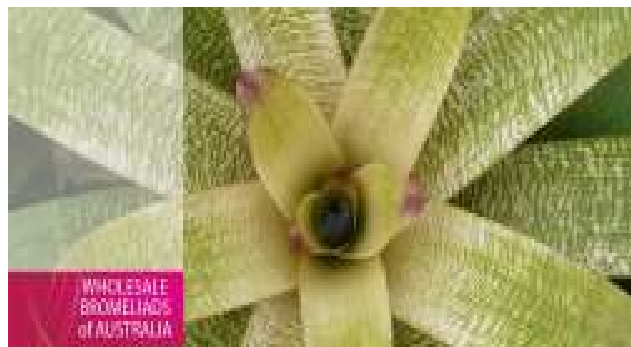
Visitors welcome by appointment.

P.0266845374.

F.0266845168.

email: plants@ausbroms.com.au

Website: www.ausbroms.com.au



Sales of incorrectly named Aechmea

John C.

In 2008 I purchased an Aechmea plant and I misread its name as Aechmea Cavalaoi and since then I have sold several of these Aechmeas at our Society Meetings with this name.

If you have purchased one of these Aechmeas please change its name to the correct name for this plant which is Aechmea carvalhoi.

Gold Coast Regional Botanical Gardens Celebrates 10th Anniversary of the First Community Planting Day

The Gold Coast Succulent and Bromeliad Society has accepted an invitation to participate in celebrations for the 10th Anniversary of the First Community Planting Day at Rosser Park, Ashmore Road, Benowa - the home of the Gold Coast Regional Botanic Gardens. The Gold Coast Succulent & Bromeliad Society will put on a plant display and sell plants on behalf of the society. Other displays and activities will include various plant societies, arts and crafts for children, live music, wildlife displays, and displays by all the different “friends” teams.

In May 2000, a panel comprising of Friends, the master planner and the Gold Coast City Council selected Rosser Park as the most suitable site for the Gold Coast Regional Botanic Gardens.

On July 28th, 2003 – National Tree Day, the Inaugural Community Planting Day was planned and coordinated by the Friends; and then Mayor Gary Baildon attended to support the first planting of more than 2000 local native plants in the mangroves to mountains walk – regular community planting days since have seen more than 20,000 native species added.

Today, with the help of the ‘Friends of the Botanic Gardens’ and the community, The Gold Coast Regional Botanic Gardens contain 31 hectares of established and developing gardens at Rosser Park - Benowa. www.friendsgcrbg.org.au www.gcparks.com.au

The Gardens provide an experience for everyone - smell and touch plants and flowers at the sensory Garden, take the mangroves to mountain walk, check out local species, visit the native butterfly garden or smell the roses in the rose garden. Fun for the whole family includes a stroll on the boardwalks around the lake, a children’s playground or a picnic in one of the many picnic areas.

Society members are welcome to join in and help celebrate the contributions made to the gardens by the “Friends of the Gold Coast Regional Gardens” and by members of the community who have generously helped in the development of our Regional Botanic Garden.

The “Friends” are a group of volunteers that support the everyday activities of the Gardens. There are various levels of involvement and commitment from the “Friends” with many choosing to simply pay their annual membership and read the quarterly newsletter to keep up with the latest developments. Other members attend the quarterly planting days and get their hands dirty... and keen groups also attend the weekly maintenance mornings, the herbarium and the Friends’ nursery. A new and exciting activity that some of the members are getting involved in is the garden guiding. This involves taking a group of visitors around the garden - the sessions can be informative but also educational. A few of the ‘Friends’ are professional horticulturists, landscape architects and botanists who help out with plant selections and design of the gardens in consultation with Council.

Our own Plant Steward, Carmon Burke is an active ‘Friend’ of the Gardens.

Come out to the gardens on July 28th between 10:00 am and 2:00 pm visit our society's display & sales area, join in the celebration and enjoy a stroll around the gardens. If you've not visited the Gold Coast Regional Botanic Gardens before, you will be pleasantly surprised and delighted.

Julie Hewetson



View from the Montaine to the freshwater wetlands – GC Regional Botanical Gardens



The Friends' Centre – hub of all visitor, education and Friends activities
GC Regional Botanical Gardens

Bromeliad Problems - Identification & Treatment

By Rob Smythe, Brom Watch Townsville March 2013

(Continued from March/April Bromlink.)

Chemical deposits?

Should not happen as broms don't foliar fertilize. Some like Tillandsia do but generally no. After spraying with fertilizer wash it into the wells. If it dries out on the plant's leaves it may concentrate its acidity by loss of water. Once dry, solid salts of ammonia could also evaporate off, again changing pH. This could affect plant but with correct maintenance procedures it should not be a problem.

Poor Colour?

Before addressing this--unnaturally brilliant colour often depicts plant is on death row. Watch out for this warning, it is asking for help.

Poor colour is usually yellowing or excess green. When a plant is grown under too hot a condition the purple pigment is the first to go. Green is then replaced by yellow. The yellow you can consider the sunscreen protection for the plants. This can contribute to photosynthesis by the plant but some green (chlorophyll) is required to complete the process. When there is not enough chlorophyll the plant will commence to die. Fortunately the variously coloured pigments can interchange and green can return to a lot of the leaf. Red, purple etc pigments have been known to return but patterns are lost and big areas of bleach may be permanent. There seems to be a point of no return in this process. I have found a good dose of high nitrogen fertiliser does help.

Water stress plus heat also causes yellowing. Make sure wells are kept topped up.

Case two is where plants look healthy, have good centre colouring but lack strong pigmentation or even absent otherwise. These are growing in too much shade or are over fertilized plants. So often people say to me that they only used long life slow release fertilizer at potting and it was only supposed to last for 6 months. Lasts forever in a packet and lasts much longer than stated in brom pots. The skirt of the brom often prevents water getting in the pot and broms are notoriously slow growers and when mature don't even need their roots for uptake. If you don't believe me try nailing a mature plant to a tree. It never attaches. You can only place them on trees by attaching by a maturing pup. The best thing to do with these green plants is to repot them with no fertilizer. This also brings them into flower. Much used by Alcantarea growers. It would appear as long as you give these plants nitrogen they will keep on growing. 40 year old plants have been recorded in the wild while the same species can be coaxed into flowering in 3 years in captivity.

Leaf Burn?

Other than burn mentioned above a common mistake is to spray plants with mineral oil leaving them to burn in the sun. Overuse of insecticides. Just remember insecticides are poisonous to plants as well as insects. There is a window of concentration strengths below which it is inactive above which it becomes phytotoxic.

My old University chemistry professor told us all chemicals are toxic. It is a matter of degree. His great quote was, " If you fall in a pool of water you drown". Most Poms could not swim in those days. Use of Canola White Oil correctly used is a way around this oil problem. Thin layers of it break down in sunlight and it peels off as a wax. Leave it on too thick and it may polymerize like linseed oil once used to make paint. Copper and Arsenic sprays are not need for broms.

Long floppy leaves?

Invariably too much nitrogen or fertilized during wet overcast periods. In Townsville the latter is a very big problem. The best time to fertilize is when the nights are cool and days fine. Winter for us. CAM plants usually need cold nights to open their pores and allow carbon dioxide uptake and hence photosynthesis. This is why you water in the evening in the tropics, to get plants cool enough by evaporation to take in carbon dioxide. I have read that water can inhibit photosynthesis by blocking pores. Maybe so for orchids and the like but not so here as bromeliads generally have their pores on the underside (dry side) of the leaf. Tillas as I said before are an exception to this rule. The other time photosynthesis occurs is during the turgid months i.e. plants packed with water. Lots of rain and high humidity. This is our wet season, summer, and is overcast. Plants grow like mad and reach for the sun, becoming long and strappy. Don't fertilize in summer if you live up here. I should say turgidity factor would be different for broms grown in enclosed areas and seasons will be different in other areas. You should be able to work out what is the best for you.

Leaf tips yellowing?

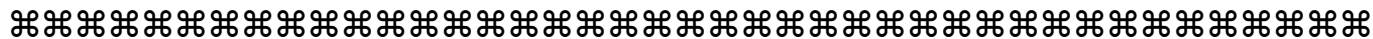
This is my most often asked question. Even USA growers have asked me for advice. This is very common with some of the softer leaved genera. Alcantarea, Vriesea, Guzmania etc. This is caused by environmental stress. Up here it is wind and heat. In the south it is probably the cold as well. Simply put, the leaf tip has the highest surface to mass ratio so it dries out first. Under stressful conditions as mentioned plus low water supply the leaf tips stress and die. I diagnosed this problem for a grower up here who had a green house. Because he had an overhead sprinkler system and plants were under potted the water did not make it into the pots. Water from the side, repot, puncture holes in lower leaves, remove plant skirt are all available methods to fix problem.

Mushy Leaves at the base?

Up here that heralds the start of the wet season (over watering) and it is time to clear these away before rot sets in. Lots of broms will grow with roots in water but not when bacteria are present and especially when anaerobic bacteria are involved. Essential to check drainage in the pot. If there is still water in the top of a pot after rain you have problems. Repot but if you can't do it immediately wash and rinse some lime water through the pot. If root rot has set in the area will be all soft. This plant must go in the bin. Another common cause of the problem is potting too deeply. Billbergias should be staked not buried. Leaves below ground level will rot off. If a plant is too unstable I often prop it up with coarse copra chunks. These let the air in.

Quilling? (Inner leaves stuck together)

This and corrugation in larger plants is caused by dehydration. Unfortunately once started it carries on for the life of that plant. Pups will be OK. You just have to forget to water an Alcantarea during a growth spurt and you have it corrugated for life. Watering every day from then on does not help. I have tried adding water crystals to Neos and it helps now trying it on Alcantareas. I think I am seeing an improvement.



INTERGENERIC NAMESsome information for you

Why *x niduregelia* as opposed to *xNeolarium*

In the 1950's Alex Hawkes was part of a breakaway group from the Bromeliad society of America BSA (now known as the Bromeliad Society International – BSI). During the period 1959 – 1963 this ‘splinter group’ published their own Journal called the “Bromeliad Paper”. Apparently a lot of what Alex Hawkes published in this journal in those days was not widely accepted.

For many years the Nothogenus *x Neolarium* was widely used for the bigeneric hybrids of *neoregelia x Nidularium*. However, in the mid 1990's when Jason Grant was compiling his ‘Annotated Catalogue of the generic names of the Bromeliaceae’, Derek Butcher asked Jason if it was considered that Alex Hawkes “Bromeliad Paper” was a valid publication.

Yes, it was indeed a valid publication with the nothogenus *x Niduregelia* being published first in this publication, which means it should take precedence over the later published name of *xNeolarium* – rendering this name invalid.

Which means – if, like me, you have a *Neolarium* Something Special in your collection - you should change the label to *Niduregelia* Something Special.



What is this plant's name?

Entries close midnight May 31st via email, post or phone to Shane. (See Contacts List)

All successful entries will go into the draw for....a surprise.

BUS TRIP - NAMBOUR GARDEN EXPO
SAT. 6TH JULY - DAY TRIP ONLY -\$40

(BUS \$25, ENTRY FEE \$14 AND RAFFLE \$1)

Bus approximate pickup times:

7am - Tugun

7.20am - Carrara Community Centre

7.30am - Coomera Service Centre



☛ Payment to be in by Saturday **25th May, 2013** at the General Meeting, as we need to have 35+ people to cover costs.



BUS TRIP - 10TH AUGUST

Join us on a trip to two lovely nursery gardens - \$30 (includes bus \$25, entry to Coucals \$4 and raffle \$1)

1. Coucals at Mt Crosby - 2 acres of beautiful gardens to explore. Cottage to rainforest, exotic and dry. Lots of variety to interest you. <http://www.coucalsgarden.com/> This web site contains some images and information about Coucals – worth a look.

2. The Olive Branch Nursery at Ferny Grove (Len and Olive Trevor)

Morning Tea will be supplied at Coucals and bring your lunch to have at The Olive Branch

Bus approximate pickup times.

7.30 am - Tugun

7.50 am - Carrara Community Centre

8.00 am - Coomera Service Centre



Payment to be in by
Saturday 22nd June, 2013
at the General Meeting as
we need to have 35+
people to cover costs

Any enquiries please call Glenda on 07 5594 6564



ADVANCE NOTICEBus trip. 14th September 2013 to BSQ Spring Show – more details to follow..... (was previously scheduled for Nov)



The aims of the society are:

- (A) To stimulate interest in the conservation, and to promote the culture and development of, succulents and bromeliads.*
- (B) To acquire and disseminate information regarding these plants and to encourage their production and propagation.*
- (C) To ban totally from our collection any such plants which become noxious.*
- (D) To enlighten members and the public on the dangers of cultivating certain noxious species.*
- (E) To give exhibitions, arrange field days, and other events, and to make such publications as are deemed desirable.*
- (F) To associate, affiliate or otherwise joint or connect ourselves with similar bodies or societies.*
- (G) To make seeds and plants available to members under the control of the Society.*
- (H) To foster family membership and members.*