

Bromlink



January - February 2013

CONTENTS

Dates for your diary / New members	2
President's Report	3
A response to What is a Succulent	4,5
My favourite Things / Shopping Centre Dates	6
Speaker Presentations for coming months	7,8
Information for our Expo in April	9
The effect of smoke on bromeliads / Drainpipe Tillandsia	10
A Quick Guide to Bromeliad Problems	11
Succulent Crossword	12
Advertisements	13

????????????????????????????

Do you want your Bromlink emailed? Want to hear of the latest succulent or bromeliad news when we do? Why not come and join us at Facebook? If you answered yes to any of those questions, email Shane to be added to the above lists:
GCSBS.President@gmail.com



EDITORIAL DEADLINE FOR THE NEXT EDITION OF

Please have any articles for inclusion to me by March 15th, 2013.

Email address— gcsbs.bromlink@gmail.com

2012-13 Volunteers

www.gcsbs.org.au



Gold Coast Succulent & Bromeliad Society Inc. (GCSBS)
PO BOX 94, Southport Business Centre, Southport QLD 4215

MANAGEMENT COMMITTEE		
<i>President</i>	Shane Weston	gcsbs.president@gmail.com Ph: 0408 247 208
<i>Vice Presidents</i>	Rob Kelly & Dennis Mills	
<i>Secretary</i>	Catherine Smith	gcsbs.secretary@gmail.com
<i>Treasurer</i>	Glenda Hodgson	gcsbs.treasurer@gmail.com Ph: 07 5594 6564
<i>Memberships</i>	Gwen Wayland	gcsbs.memberships@gmail.com
<i>Other Committee Members</i>	Carmon Burke, John Crawford, Julie Hewetson, Monica Mead, Tom Norris, Judy Paterson & Ann Schenk	
VALUED VOLUNTEERS		
<i>Bromlink Editor</i>	Jeanette Henwood	gcsbs.bromlink@gmail.com
<i>Special Projects</i>	John Crawford & Julie Hewetson	
<i>Librarians</i>	Jennifer Laurie & Jan Tobiano	
<i>Field Days & Bus Trips</i>	Glenda Hodgson & Monica Mead	
<i>Off-Site Sales</i>	Tom Norris	
<i>Plant Displays</i>	Berice Bragg, John Crawford & John & Pam Gaddes	
<i>Sales Co-ordinator (Barcodes)</i>	Julie Hewetson	gcsbs.plantsalescoordinator@gmail.com
<i>Sales Team</i>	John Crawford, Elizabeth Day, Ruth Dickson, Jeanette Fowler, Eliza Hesse, Julie Hewetson & Carole Solomon	
<i>Sales Stewards</i>	Carmon Burke, Norma Fleet & Helen Mueller	
<i>Sales Support</i>	Graeme Synold, Rob Kelly, John Gaddes	
<i>Meet & Greet</i>	Ann & Harry Schenk	
<i>Refreshments</i>	Janice l'Anson	
<i>Raffles</i>	John & Judy Paterson	
<i>Guest Speakers</i>	Kerry Tate	
<i>Publicity</i>	Ann Schenk	
<i>Supplies Table</i>	Marilyn & Tom Rivett (Orchid Den)	
<i>Webmaster</i>	Shane Weston	gcsbs.website@gmail.com
LIFE MEMBERS		
Narelle Aizlewood, Graham Besgrove, John Catlan, Wendy Hansen, Mary Nicholson, Neville Ryan & Genny Vauhkonen		

Dates for your Diary!



www.GCSBS.org.au

Meetings held at the Carrara Community Centre, Nielsens Rd, Carrara (Motorway Exit 73)

<i>DATE</i>	<i>EVENT</i>
Jan 17, 18 & 19	Mudgeeraba Shopping Village - Display and Plant Sales
Jan 26	General Meeting - Carrara Community Centre Plant Sales: 12:00 pm Meeting: 1:00 pm to 3:30 pm Main Event - "GCSBS Annual Quiz" with Kerry Tate Feature Speaker - "Hohinfatuation" with Matt O'Brien
Feb 7, 8 & 9	Tweed Mall Shopping Centre - Display and Plant Sales - TBC
Feb 16	Field Trip - Catlan's Nursery - Jacobs Well From 9am bring your lunch and a chair
Feb 23	General Meeting - Carrara Community Centre Beginners/novice class 11:30 with John Catlan Plant Sales: 12:00 pm Meeting: 1:00 pm to 3:30 pm Main Event - "What's Hot & Other Eye-Candy" with Olive Trevor
Mar 7, 8 & 9	The Pines Shopping Centre (Elanora) - Display and Plant Sales
Mar 15 -18th	Cool Broms 2013 - Australasian Bromeliad Conference Auckland NZ (More details on our website www.GCSBS.org.au)
Mar 16	Member's Day Bus Trip ~ Pine Grove and Allan Ladd's Bromeliad Nurseries then Kathleen Henderson's Cacti and Succulent Nursery
Mar 23	General Meeting - Carrara Community Centre Plant Sales: 12:00 pm Meeting: 1:00 pm to 3:30 pm Main Event – "The diversity of Bromeliads and Succulents" with John Catlan & Genny Vauhkonen Feature Speaker – "Tillandsia Temptations" with Neville Ryan



Welcome to these new members who have joined our society.
We hope you enjoy your time with us.

Len and Olive Trevor

Leanne Clayton

Shirley McCall

Steve Hogan

• *President's Report*



Hello & welcome to 2013, the year of the Snake.

I hope all had a wonderful end of year & New Year celebration; although I am aware of one very sad loss that impacted an important & valued volunteer of our Society. So, may time and your friends & family help ease the pain.

Well this time last year it was rain and rot losses of broms; now we are experiencing heat, and if your broms are like mine - scorching. It is a tough game this gardening! Oh for a good few days of drizzle - perhaps we should provide some rain dance lessons at next general meeting!

We do hope all enjoyed the Monster Raffle at our previous meeting, I know I had good reason to be thrilled! I think most would agree there were some VERY good plants available - and rarities as well! Many thanks to Rob & Rosie Kelly for selecting & sourcing such beauties, and also to those who donated plants! Overall we believe the raffle was successful. We spent \$2000 on plants and took \$1470 in ticket sales.

In this Bromlink you will see the planned activities list for the next few months. Many thanks to Kerry for getting this together. In April we plan on presenting 'These are a few of my favourite things.' (See article on page 6.) Now of course we really need members to contribute, please come forward and see me. Don't make me 'call' for volunteers. :)

Planning is also well under way for our 'GCSBS Autumn Succulent & Bromeliad Expo' on April 13th. Sellers' table orders are open now and should be lodged with myself. Table orders close 1st April. At the Expo we will also be conducting our annual 'GCSBS Display & Popular Vote competition.' Further details on the Expo are published on page 9.

Shopping Centre sales are an important avenue for our Society in spreading the good word about our Society, Succulents & Bromeliads, and of course they are a valued source of revenue for us to cover operating expenses. Tom has done some great work in organising many dates at our regular venues. (See Page 6 for dates.) Members are welcome to participate in these events. Please see Tom for Mudgeeraba, Berice for Tweed & Elanora and John & Pam for Southport.

More activities!! On Sat Feb 16th we have a Field Trip to John & Genny Catlan's at Jacobs Well. I love visiting with John & Genny and discovering some treasures. Then there is the opportunity to sit and have a chat under the mango tree. So bring a chair and your lunch and we'll see ya there from 9am on 16th Feb.

With due recognition of their valued contribution to our Society, I thank John & Judy Paterson for their voluntary efforts as our Raffle Sellers. However other commitments now mean that they will no longer perform this role from February. Therefore if anyone would like to volunteer as our chief Raffle seller(s), please let me know.

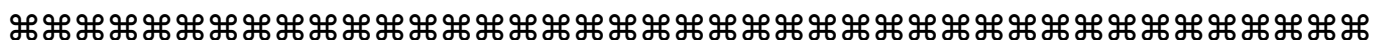
Our Plants of the Month for January are: Catopsis, Hohenbergia, Neoregelia & any Succulent. For February they are: Aechmea, Billbergia & any Succulent. Please bring in yours to show and tell, you never know ~ you may win a prize....!

*Remember our Jan meeting is on 26th - Aussie Day.
Appropriate dress may very well be rewarded....*

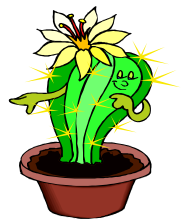


OK, enough from me; Happy Gardening & Broms Away, now go and do some study for our Annual Quiz at the January meeting and keep rain dancing!

*Shane Weston
GCSBS.President@gmail.com
T: 0408 247 208*



THE IMPORTANCE of USING the CORRECT BOTANICAL NAMES for our PLANTS WHETHER CACTI and other SUCCULENTS or BROMELIADS



BROMLINK Nov/Dec 2012, page 5, “So, What Exactly is a Succulent”,
TOO MANY NAMES, I’M CONFUSED!

What a load of confusing name calling. If you were to walk into a retail nursery and ask for the Cinderella, Shrek or the Tiger Jaws and Jade plants more than likely you would walk out with all of them (last season). If you wanted to find out more about these plants e.g.; growing conditions, dormant period, watering, aspect – all reasonable queries – who are you going to ask? What reference is going to tell you about Cinderella or Shrek? The internet may well enlighten you via the ‘Drag Queen’ and ‘Disney’ pages.....three hours later.....If, however, the plant was labelled correctly, you would find it on the internet in seconds (if that is your chosen reference), in books (we all have books on our special plants) or talk to a specialist grower (we all fall into this category). Kids would ask me at the markets if I had the ‘Shrek’ plant, well, I didn’t have a clue, and this went on for months. Then, the last C & S conference in Melbourne, I found out that I have had the plant for years. **Does the common name fit? You bet, perfectly.** I could have sold these kids 100’s of ‘Shrek’ plants had they known/been told the correct botanical name of the plant in the first place.

The ‘Bromlink’ article is jumbling up common names with the genera or species or the now defunct common name or the family names or combining family and common names. So let’s get the things straight.

Let’s look at the ‘jade plant’; do we all know which plant I am referring to? Does the ‘jade plant’ you refer to have large or small leaves? If small leaves, you are after *Portulacaria afra* do you want the green form, variegated form, prostrate green form or the gold form?

By the way this plant is in the PORTULACACEAE family. However, if you want the large leaf 'jade' you are after *Crassula ovata*, do you want the green form, the variegated form the compacta form or the golden form? This plant is in the CRASSULACEAE family, and, guess what..... 'Shrek' is (probably) a mutation of *Crassula ovata*.

EVERY plant belongs to a Family, the Family name always ends in **ceae** so for 'Shrek', start with CRASSULACEAE = family name, Crassula = genera, ovata = species and 'SHREK' is the common name or pet name.

For those of you who have blanked out because I am talking about Cacti and other succulent plants, the above naming structure applies to Bromeliads too.

For example BROMELIACEAE = family name, Tillandsia = genera, usneoides = species and 'old man's beard' or 'Spanish moss' = common names.

NOTE In the CACTACEAE (Cactus) and BROMELIACEAE families there are also sub-families, however, I will leave that explanation to someone else.

Back to the article – “Most succulents are from tropical and subtropical dry regions and do not tolerate cold”. Alright I admit I don't know the correct percentage of succulent plants that do not tolerate cold, however, in Canberra you will find some pretty good C & S collections and not all in glass houses. Our local experts have always said Victoria is the best place in Australia to grow C & S, its cold there; so many C & S love the cold. They perform beautifully, colour-up dramatically. Most of us have seen the huge *Carnegiea gigantea* or *Saguaros*, you know, the classic two armed cactus in the cowboy movies with John Wayne riding amongst them in the snow! Severe frost can be a problem if the C & S are plump, full of water, however if dry/dormant frost should not be a problem.



So many of the C & S we try to grow in northern NSW and south east Qld fail because we don't have the four seasons, it's not cold enough, too humid so quite often our plants are stressed and grow too 'leggy' then collapse. But is that going to stop us trying.....I don't think so.

Did anyone notice the word “photosynthetic” in the said article and wonder 'what thu', yes me too. It refers to the process of photosynthesis being carried out in the stem instead of the leaves as in normal plants.

Photosynthesis – The process by which water and carbon dioxide from the air is converted into sugars, using the energy of light on chlorophyll.

That's it from Cactus Kate.

[Thanks Kathleen, it's great to see member's contribution like this, and healthy debate also, says Shane! We need more member's to contribute please!]



CALLING FOR MEMBER SPEAKERS FOR APRIL MEETING

Theme: “These are a few of my favourite things”



Confession time! How many of our bromaholic members take more photos of their beloved broms and succulents than of their kids, grandkids, and/or pets? If you are guilty as charged, and don't mind bragging, then please consider sharing your passion with us. Our eager president, Shane, has been suggesting this for a while. The time has come. We will have our first “Members’ Presentation” at the April general meeting.

Time: from two to ten minutes duration per member.

Subject: “Our Favourite Things”, and why they are.

Format: Either show-and-tell with live plants, and/or photos shown in a slide show/PowerPoint presentation on our large screen. The use of a microphone is up to each speaker.

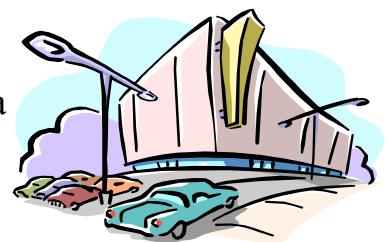
N.B. Photos need to be either emailed to Shane as attachments, or brought in to a previous meeting so they can be scanned and included in digital format prior to the April meeting. You do not need to be technology-savvy – we have experts to do the preparation for you.

We will need approximately six to ten volunteers to strut their stuff at the April meeting. See Shane if interested. If we get more members willing to give it a go, we will hold another similar event later in the year. The success of this first event depends on you, dear members. Don't be shy! We know there is a lot of knowledge and passion amongst you.



2013 Shopping Centre Sales Dates ~ Subject to change

January	17, 18, 19	Mudgeeraba Shopping Village
February	7, 8, 9	Tweed Mall
March	7, 8, 9	The Pines Shopping Centre - Elanora
April	11, 12	Mudgeeraba Shopping Village
May	9, 10, 11	Southport Park Shopping Centre
July	11, 12, 13	Mudgeeraba Shopping Village
August	8, 9, 10	Tweed Mall
October	10, 11, 12	The Pines Shopping Centre - Elanora
Oct	31 Nov 1, 2	Southport Park Shopping Centre
November	7, 8, 9	Mudgeeraba Shopping Village



Have you booked your seat on the Members' Day Trip yet?

Sat March 16th, Pickup Carrara Community Centre & Tugun. \$25pp

Visiting: Kathleen Henderson, Allan Ladd and PineGrove Nursery - all Northern NSW.

SPEAKER PRESENTATIONS & MEETING EVENT PROGRAM – 2013

January to April



JANUARY general meeting – Saturday, 26th

Main event: “The GCSBS Annual Quiz” with Quizmaster Kerry Tate.

Members are invited to participate in another fun, multiple-choice quiz about our beloved succulents and bromeliads.

This event promises to be an entertaining, educational and relaxing way to start the New Year.

The 2013 quiz winner will be presented and adorned with the perpetual, champion crown. Who will that be?

NB. Please bring a pen or two.

Feature event: "Hohinfatuation" with Matthew O'Brien.

Hohinfatuation [*hoh-infat-uation*] : *Is the state of being completely carried away by unreasoned passion or love for the Hohenbergia genus.*

Matt will reveal and entice us with his obsession and knowledge of this unusual genus of bromeliads.

WARNING - prepare to become a converted Hohnut!



FEBRUARY general meeting – Saturday, 23rd

Main event: “What’s Hot & Other Eye-candy” with Olive Trevor.

Olive will treat us with a show-and-tell presentation which will include many newly-imported bromeliads such as recent hybrids by Chester Skotak and others. Olive is one of Australia’s foremost importers of bromeliads, and always generous with her knowledge. We thank her for making available so many beautiful bromeliads for us to enjoy. From her vast collection of bromeliad genera, Olive will also show and discuss some which are looking their best at this time of year.

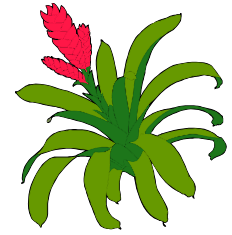
NB. Olive will have an array of choice bromeliads **for sale** at the meeting. Don’t miss out!



MARCH general meeting – Saturday, 23rd

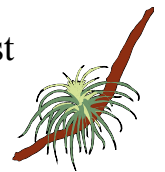
Main event: “The Diversity of Bromeliads & Succulents” with John Catlan and Genny Vauhkonen.

John and Genny will share their amazing knowledge in their inimitable and entertaining style. They will show and discuss foliage-patterned Vriesea, and defend the qualities of green-leaved Vriesea with their beautiful and colourful flower spikes. John and Genny will entice us with a wide range of weird and wonderful plants from their diverse collection - some odd succulents, some unusual and less-common bromeliads e.g., Dyckia, Puya, Cryptanthus, bigeneric hybrids, and whatever else is a current and transportable novelty.



Feature event: “Tillandsia Temptations” with Neville Ryan.

What Neville doesn’t know about the genus Tillandsia is not worth knowing. Most of us think of the many tiny, silvery fuzzballs as looking much alike...**not so** to the avid Tillnuts of this world! Get into the nitty-gritty with Nifty Nev...and be amazed by these curious aliens of the bromeliad family.



NB. John, Genny and Neville will all have plants for sale. Yippee!



APRIL general meeting – Saturday, 27th

Main event: “These Are a Few of my Favourite Things” with our own members (TBA), and hosted by our president Shane Weston.

Shane will introduce several of our members who will share with us their favourite bromeliads and succulents. They will show-and-tell us why they are favourites, wax lyrical on their merits and share growing tips. Each speaker will present for 2-10 minutes. Sign up! It will be fun if we make it so.

NB. See more information about this event elsewhere in Bromlink. (Page 6)

Feature event: “More Favourite Things” with Greg and Narelle Aizlewood.

It's doubtful Greg and Narelle will be showing us raindrops on roses, nor whiskers on kittens as a few of their favourite things. Chances are we'll see some hot Billbergia, Aechmea, Vriesea, Cryptanthus etc., and maybe even a photo of their gorgeous grand-daughter!



Did you let us know who or what you would like to hear about from speakers and presentations during 2013?

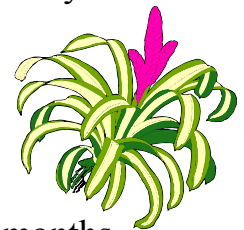
GCSBS Autumn Succulent & Bromeliad Expo

~ Saturday 13th April 2013 ~ 9am to 3pm ~

- Only financial members who have also attended a minimum of 5 General Meetings in the previous 12 months are eligible to sell plants at the show.
- Sales' tables orders should be lodged now until 1st April with Shane Weston.
- Succulents, Bromeliads and Tropical Plants only should be available for sale.
- The Society's commission on member's Expo sales will be the usual 10% and regular sales guidelines will apply to the event.
- Set up for plant sales & display will be from 5pm until 9 pm on Friday 12th April, and also on Saturday morning 13th April from 7am until 8.30am.
- No sales, display or competition plants can be removed or packed away prior to 3pm.
- Members selling plants at the show should provide quality plants for the display.

Registration & placement of plants for Popular Vote Competition will only be available from 6 – 8pm on Friday evening and again from 7-8am on Saturday morning. This allows adequate time to display the plants. Please print clearly on the registration form and present this form with your plants. You don't have to register your plants in person; a friend may do this for you. Please indicate the category you are entering, the plant name and remember to write your name on the top of the sheet! ☺
(Registration Forms available from Shane or at each upcoming General Meeting.)

Three perpetual trophies will also be awarded. An overall bromeliad winner – The Roly Reilly Perpetual Trophy. An overall succulent winner – The Kathleen Henderson Perpetual Trophy, and The Judges Choice Trophy donated by Tom and Marilyn Rivett will be awarded to the plant deemed to be the Best in Show.



Popular Vote Competition Standards:

- Only GCSBS financial members can participate.
- Plants entered must have been owned by the exhibitor for at least six months
- Pots and potting mix are to be dry with tank bromeliads empty of water.
- Single members/family members may enter up to three (3) plants in each class
- There will be five categories for succulents and thirteen categories for bromeliads
- First, second and third place ribbons will be awarded in each class – if applicable
- Members (only) have one vote in each category and should also vote for their most favoured Succulent and Bromeliad. These will be for 2 of the above mentioned trophies and are the plants you'd like to have in your collection at home!!
- Voting will close at 12 noon, tallied and winners announced at approx 2pm.

We had a great response last time, and we've have an extra year of growing experience, so let's get involved and participate to make it a success.

** Popular Vote Competition Registration Forms, will be available at all meetings leading up to our Expo, or see/contact Shane.*

Broms and Bushfires

The current spate of bushfires around the country may lead to unexpected and out-of-season flowering in bromeliads. Bush fires, and particularly smoky grass fires, can generate minute amounts of ethylene which is extremely effective in initiating flowering in bromeliads. (*Bromeliaceae* is the only plant family where flower development can be initiated by chemicals).

In mature plants, this does not usually have any detrimental effect. However, flowering may also be induced in seedlings, small offsets or immature plants which do not have the energy or mineral reserves to support the sudden spurt of growth essential to develop and mature a normal inflorescence. In this case, the result is usually a small, weak inflorescence and a weakened plant. After flower induction, it will be several weeks before flower development is apparent. For valuable plants, my best suggestion is to cut off the developing flower head as soon as it is apparent and hope that the plant has enough reserves to produce an offset.

Peter Paroz

The Drainpipe Tillandsia

Tillandsia somnians looks like a small *Neoregelia* when it isn't in flower. It has 10 to 20 leaves about 30cm long forming an open rosette around 30cm. in diameter. The leaves are reddish when grown in strong light – but not full sun.

The floral bracts are relatively inconspicuous, and occur at the end of a one meter (or longer) “stalk” (floral scape). Offsets form freely along the floral scape.

Because of the plant's flowering/growth habit, it can be trained (over several generations) to grow up tall vertical surfaces, such as, the drainpipes for a house. I have mine growing up an old tree fern trunk.

There are several photographs of *T. somnians* in the *New Tillandsia Handbook* by Hideo Shimizu and Hirouli Takizawa. Plants of this species are not common, but if you ask around, you should be able to obtain one. It **appreciates regularly** receiving a liquid fertiliser such as Phostrogen.

Written by Bob Reilly and Reprinted from Bromeliaceae VOL. XXXVI - NO. 1 - MAY/JUNE 2002

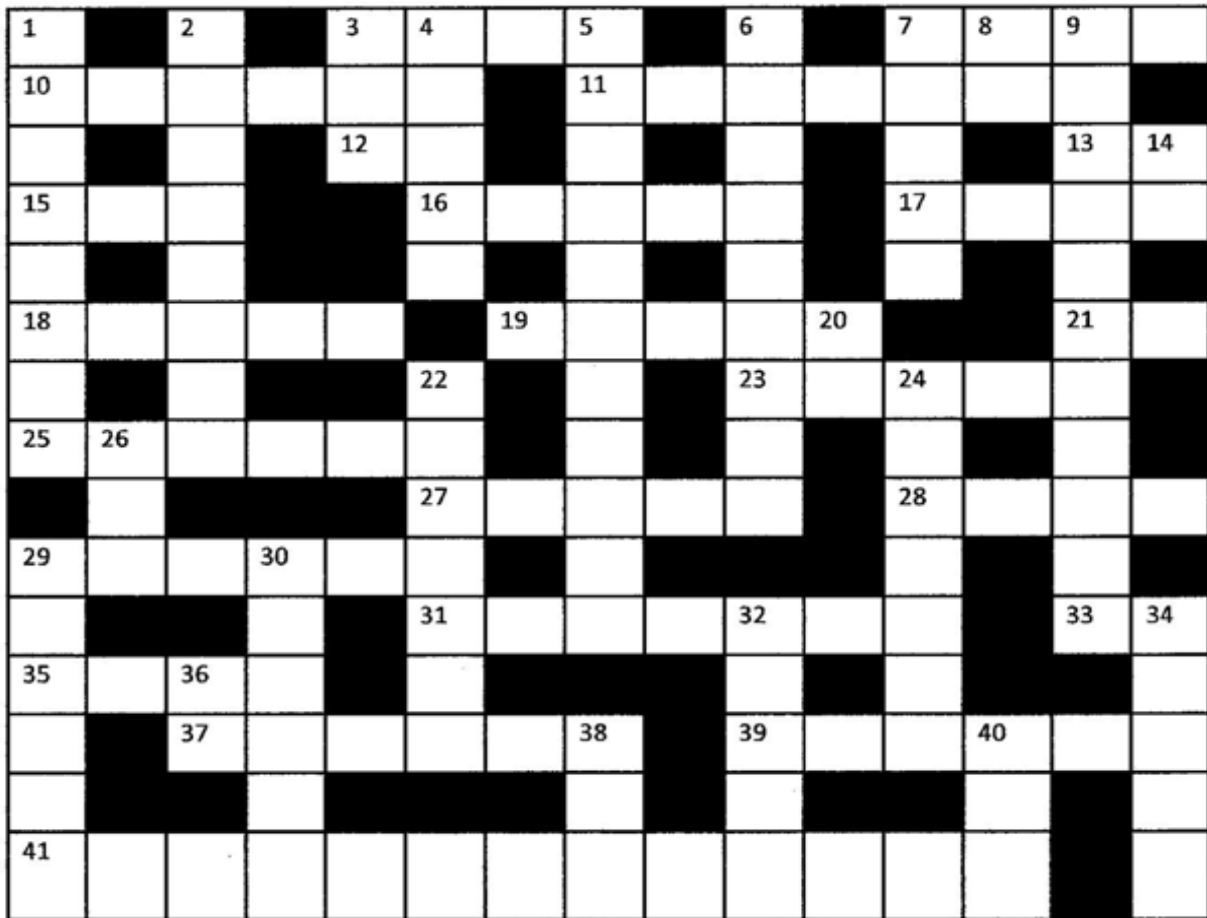
UPCOMING BROMELIAD EVENTS

Cryptanthus Workshop – 20 April 2013 to be held in conjunction with the Bob and Mavis Paulsen Cryptanthus Day at the Community Centre, Millwell Street, Maroochydore.



This will be hosted by the Sunshine Coast Bromeliad Society Inc. Please notify Cheryl Basic at wildfiregarden@westnet.com.au if you wish to attend. Details of programme to be advised.

CROSSWORD



ACROSS

3. Prune, cut (4)
7. Leaning, inclination (4)
10. Type of *Euphorbia* (6)
11. Plants derived from crossing two varieties, species etc (7)
12. To be in the morning? (2)
13. Infectious disease (abbr) (2)
15. Australian native bird (3)
16. Projection, bump (5)
17. Corn has them, but it's partly hearsay. (4)
18. Equivalent of a seed in ferns, eg (5)
19. Trace element required by beetroot (5)
21. Symbol for lead (2)
23. Angular cut, indentation (5)
25. Drive off, scatter (6)
27. Egg or oval shaped (Latin) (5)
28. Central soft stem tissue of some plants (4)
29. Opposite of alkaline (6)
31. Type of *Stapeliad* (7)
33. Doctor (abbr) (2)
35. Vines used in brewing (4)
37. ... Virus, carried by horses (5)
39. Fashions for flowers? (6)
41. Tall prickly purple flowered weed (6, 7)

DOWN

1. Plunged into liquid (8)
2. Bluish grey or bluish green (8)
3. US intelligence organisation (abbr) (3)
4. Use these to climb the ones on a tree (5)
5. Flattened stem functioning as leaf (11)
6. Slow-growing cactus, thick roots (9)
7. Stings (5)
8. Identification (abbr) (2)
9. Cactus, many with small white woolly spots (11)
14. Surgery degree (abbr) (2)
20. Negative vote (2)
22. A hooked cactus hair (7)
24. Art of pruning into shapes (7)
26. Incorporated (abbr) (3)
29. Sap-sucking insects (6)
30. Typical cactus habitat (6)
32. You may find eggs in these! (5)
34. Round flat segments on, eg *Opuntia* (5)
36. Measure of soil sweetness or sourness (2)
38. Added to potting mix by some growers (3)
40. Sheltered side (3)

Good luck! Solution in next issue.



BROMELIAD MEGA SALE



SAT 16th & SUN 17th February 2012 7am-3pm

****1000'S TO CHOOSE FROM***

***LARGE COLLECTIONS ON SALE FROM LOCAL GROWERS,
*NEW, RARE AND HIGHLY SOUGHT AFTER VARIETIES AVAILABLE**

HUGE VARIETY

**FULL SUN LANDSCAPING PLANTS TO SHADE LOVERS
VRIESEAS, NEO'S, AECHMEAS, ALCANTAREAS,
CRYPTANTHUS, MINI NEO'S TILLANDSIAS & MORE**

LOADS OF BARGAINS

Mal & Michelle Cameron's

11 APOLLO CRT VICTORIA POINT

FOR ENQUIRIES PH: 0413679020

mmrcam@bigpond.net.au

WHOLESALE BROMELIADS of AUSTRALIA, THE POCKET

(Near Mullumbimby, Northern NSW)

Large range of bromeliads - Agents for Deroose, Exotic Plant of Belgium and Andrew Maloy's KIWI COLLECTION VRIESEAS.

Visitors welcome by appointment.

P.0266845374.

F.0266845168.

email: plants@ausbroms.com.au

Website: www.ausbroms.com.au



The aims of the society are:

- (A) To stimulate interest in the conservation, and to promote the culture and development of, succulents and bromeliads.*
- (B) To acquire and disseminate information regarding these plants and to encourage their production and propagation.*
- (C) To ban totally from our collection any such plants which become noxious.*
- (D) To enlighten members and the public on the dangers of cultivating certain noxious species.*
- (E) To give exhibitions, arrange field days, and other events, and to make such publications as are deemed desirable.*
- (F) To associate, affiliate or otherwise joint or connect ourselves with similar bodies or societies.*
- (G) To make seeds and plants available to members under the control of the Society.*
- (H) To foster family membership and members.*