

BROMLINK



January~February 2012



Secretary, GCS&BS Inc.
P.O. Box 94,
Southport Business Centre,
Southport, Qld, 4215
www.gcsbs.org.au

Office Bearers 2012

PRESIDENT.....Judy Paterson 07 55798894
VICE PRESIDENT.....Graeme Bullen 07 55257815
IMMEDIATE PAST PRESIDENT.....Tom Norris 07 55295446
TREASURER.....Glenda Hodgson 07 55946564
SECRETARY.....Eileen Kovic 07 55272882
MEMBERSHIP SECRETARY.....Gloria Dunbar 02 66899281
EDITOR.....Gail Young 07 33883575
COMMITTEE.....Carmon Burke, Monica and Colin
Mead, Ann Schenk, Julie Hewetson
and Gail Young
LIBRARIAN.....Jennifer Laurie
ASSISTANT LIBRARIAN.....Jan Tobiano
GUEST SPEAKER CO-ORDINATOR.....Kerry Tate
CONFERENCE CO-ORDINATOR.....Greg Aizlewood
PLANT DISPLAY CO-ORDINATORS... John Crawford, Paul & Karin Van Tol
and Berice Bragg
PLANT SALES CO-ORDINATOR.....Julie Hewetson
(General Meetings and Sales Days)
SPECIAL PROJECTS OFFICERS.....John Crawford and Julie Hewetson.
PLANT SALES STEWARDS.....Carmon Burke, Norma Fleet, Maree
McFarlane, and Helen Mueller
SALES TABLE.....Tom and Marilyn Rivett
REFRESHMENT SUPERVISOR.....Janice I'Anson
RAFFLE CO-ORDINATOR.....John Paterson
HOST/HOSTESSES -- DOOR.....Ann and Harry Schenk
NAME BADGES.....Harry Schenk
PUBLICITY OFFICER.....Ann Schenk
PHOTOGRAPHER/WEB MASTER.....Glenda Hodgson

LIFE MEMBERS

Mary Nicholson, Graham Besgrove, Genny Vauhkonen, John Catlan,
Neville Ryan, Wendy Hansen and Narelle Aizlewood.

CONTENTS




Dates for your diary 2012.	Pages 1,2,3
Guest speakers for 2012	Pages 4,5
Plant of the month	Page 6
President's Report	Page 7
New members	Page 7
Shows and Events 2012.	Page 8
Take Notes—organising your plants	Page 9
General information, ads	Page 10
Report on the Brisbane Show	Page 11
Guide lines for borrowing from Library.	Page 12

General meetings are held every 4th Saturday of the month at Carrara Community Centre, Nielsens Rd, Carrara.



DATES FOR YOUR DIARY 2012

<u>DATE</u>	<u>EVENT</u>
January 28	General Meeting Carrara Community Centre, Nielsens Rd, Carrara. Plant Sales 12.00 p.m. Meeting begins 1.00 p.m.
February 9, 10, 11	Tweed Mall Shopping Centre – display and sales. (to be confirmed)
February 25	General Meeting – Carrara Community Centre, Nielsens Road, Carrara. Beginners Class 11.30 a.m. Plant Sales 12.00 p.m. Meeting begins 1.00 p.m.
March 8, 9 & 10	Pines Shopping Centre - Display and Sales.
March 24	 General Meeting – Carrara Community Centre Nielsens Road, Carrara. Orientation for New members and visitors 11.30 a.m. Plant Sales 12.00 p.m. Meeting begins 1.00 p.m. CENT AUCTION TODAY
April 28	General Meeting – Carrara Community Centre Nielsens Road, Carrara. Beginners Class 11.30 a.m. Plant Sales 12.00 p.m. Meeting begins 1.00 p.m.

**DATES FOR YOUR DIARY 2012 (Cont'd)****DATE****EVENT**

May 10, 11 & 12	Southport Park Shopping Centre – display and sales.
May 26	General Meeting – Carrara Community Centre Nielsens Road, Carrara. Orientation for New members and visitors 11.30 a.m. Plant Sales 12.00 p.m. Meeting begins 1.00 p.m.
June 23	General Meeting – Carrara Community Centre Nielsens Road, Carrara. Beginners Class 11.30 a.m. Plant sales 12.00 p.m. Meeting begins 1.00 p.m.
July 28	General Meeting - Carrara Community Centre Nielsens Road, Carrara. Orientation for New members and visitors 11.30 a.m. Plant Sales 12.00 p.m. Meeting begins 1.00 p.m.
August 9, 10 & 11	Tweed Mall Shopping Centre – Display and Sales. (to be confirmed)
August 25	General Meeting - Carrara Community Centre Nielsens Road, Carrara. Beginners Class 11.30 a.m. Plant Sales 12.00 p.m. Meeting begins 1.00 p.m.
September 22	ANNUAL GENERAL MEETING – Carrara Community Centre, Nielsens Road, Carrara. Orientation for New members and visitors 11.30 a.m. Plant Sales 12.00 p.m. Meeting begins 1.00 p.m. CENT AUCTION TODAY.

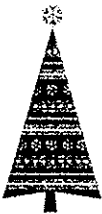




DATES FOR YOUR DIARY 2012 (Cont'd)

DATE

EVENT

<p>October 11, 12 & 13</p>	<p>Pines Shopping Centre – display and sales.</p>
<p>October 27</p>	<p>General Meeting – Carrara Community Centre Nielsens Road, Carrara. Beginners Class 11.30 a.m. Plant Sales 12.00 p.m. Meeting begins 1.00 p.m.</p>
<p>November 8, 9 & 10</p>	<p>Southport Park Shopping Centre – display and sales. (to be confirmed)</p>
<p>November 24</p> <div style="text-align: center;">  </div>	<p>General Meeting – Carrara Community Centre Nielsens Road, Carrara. Orientation for New members and visitors 11.30 a.m. Plant sales 12.00 p.m. Meeting begins 1.00 p.m.</p> <p><i>CHRISTMAS PARTY AND LARGE PLANT RAFFLE.</i></p>

Program for Guest Speakers coming up over the next few months

JANUARY

Main speakers - ROSIE and ROB KELLY - Quizmasters extraordinaire.

Topic - "*THE ANNUAL G.C.S. & B.S. BROM/SUCC QUIZ!*"

Members are invited to participate in a fun, multiple-choice quiz about our beloved bromeliads and succulents. This promises to be an entertaining, educational and relaxing way to start the new year. By whom will our defending champion, Shane Weston, be outwitted??

NB. Please bring a pen or two.



Mini speaker - SHANE WESTON

Topic - "*INTRODUCING HOHENBERGLIA*" - a less-commonly grown genus renowned for its sculptural and unique species. Beauties or beasts? Here is your opportunity to decide for yourselves, and learn more about this unusual genus.

FEBRUARY

Main speaker - BRUCE DUNSTAN



Topic - "*COLOURFUL COLUMBIA*", plus trade secrets of a champion seedling grower.

Buckle your seat-belts as we head off to Columbia on a personal tour of this nature wonderland. See images of plants growing in their natural habitat and listen to Bruce's tales of exciting, oft-treacherous adventures. Always in search of those rare species, learn how Bruce deals with collected seed upon his return to our fair shores.

Mini speaker - KERRY TATE

Topic - "*INTERGENERIC HYBRIDS*" - ugly mutants or man-made masterpieces? What are they? Kerry defends this oft-maligned group of plants with specimens to persuade you of their worth.

MARCH

Main speaker - KERRY TATE

Topic - "*CALIFORNIA GOLD*". Kerry continues her U.S. bromquest travelogue with visits to renowned hybridiser John Arden's home nursery and collection, Bird Rock Tropicals Nursery owned by Pamela Hyatt, L.A.'s Huntington Gardens, and several other respected bromeliad collections in Southern California. There will also be some sightseeing of the grounds and magnificent Spanish architecture at Balboa Park, and the world-famous San Diego Zoo - where the local bromeliad society members maintain a wonderful bromeliad garden.



Mini speaker - GREG AIZLEWOOD

Topic - "*CRYPTANTHUS*" - earth stars of celestial beauty. Everything you wanted to know about this genus, but were afraid to ask.

APRIL

Main speaker - to be confirmed and advised in the March-April edition of Bromlink.

Topic - "*SUCCULENTS*"

Mini speaker - KATHLEEN HENDERSON

Topic - "*UNUSUAL SUCCULENTS*". Our resident succulent expert will wow us with these intriguing plants. More information on our "Succulent April" meeting in the next Bromlink.





lant of the month. A reminder to all members, if you a have good specimen from the nominated genera, please do not hesitate to bring it in to exhibit. The plant doesn't necessarily have to be in flower, we also grow for their foliage.

January	Aechmea, flowering Vrieseas, Tillandsias, and Hohenbergias.
February	Ananus, Intergeneric plants, Tillandsias and full sun Neoregelias.
March	Cryptanthus, Tillandsias, full sun Aechmeas, and Canistrums.
April	Cryptanthus, Tillandsias and Succulents.
May	Spotted Neoregelias, Orthophytums, Tillandsias and variegated Bromeliads.
June	Alcantareas, foliage Vrieseas, Dyckias, Hechtias, and Asterias
July	Billbergias and Guzmanias
August	Foliage Vrieseas, Billbergias, Catopsis & miniature Neoregelias
September	Billbergias & Guzmanias
October	Vrieseas, Neoregelias, Nidulariums, Guzmanias and Crassulaceae
November	Not often seen Bromeliads & Succulents.

Presidents Report

Happy New Year to all - I wish all a healthy and prosperous New Year. Please don't forget to renew your annual subscription, if you have not already done so.

We really need a Field Trip and Bus Trip organiser. I will ask for a volunteer at the next meeting. Our field trips will be on the second Sunday in May and then again in September.

We already have some wonderful gardens to visit but if you would like a visit to your garden please just let the new organiser know.

The bus trips are well under way with Karin doing a lot of work. Our bus driver has changed companies but still wants to do our trips for the year.

There is still a weekend bus trip planned I would like to know just how many members and friends would like to go.

To all the plant sellers I wish you a very prosperous year. We are only as good as the members who give of their time.

I extend my thanks to all members who do so much towards making the club strong and successful.

Judy Paterson

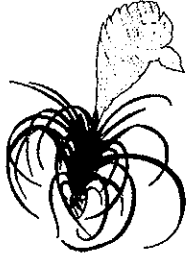


A warm welcome to our New members

*Neville French
Peter and Di Webster*



We hope you enjoy learning more about Bromeliads & Succulents from our meetings with our guest speakers, and look forward to seeing you on our field trips we organize through out the year.



DETAILS OF OTHER SOCIETY SHOWS / EVENTS FOR 2012

MARCH 10 - 11 Wavell Heights Spectacular -- Display and Sales of Bromeliads. Edinburgh Castle Road, Wavell Heights.

SUCCULENTICON 2012 ~ 30th March to 2nd April 2012, Melbourne, VIC.



For further details and contact information please see Kathleen Henderson.

Bromeliad Society of Queensland -- Autumn Show—Table Tennis Centre, Windsor.

APRIL 28 - 29 Sunshine Coast Bromeliad Society – Bromeliad Spectacular -- Display and Sales of Bromeliads. Community Centre, Millwell Road, Maroochydore.

JUNE 9 – 10 Cactus & Succulent Society of Queensland – Annual Show - The Auditorium, Botanical Gardens, Mt. Coot-tha.

OCTOBER 13 - 14 Wavell Heights Spectacular -- Display and Sales of Bromeliads. Edinburgh Castle Road, Wavell Heights.

Bromeliad Society of Queensland -- Spring Show—Table Tennis Centre, Windsor.

“COOL BROMS” AUCKLAND 2013 AUSTRALASIAN BROMELIAD CONFERENCE. Friday March 15 – Monday March 18 2013.



To register your interest...

Email coolbroms@bsnz.org—just type in ‘send us cool broms info’ and you’ll get all the latest conference news and all the ‘early bird’ offers.

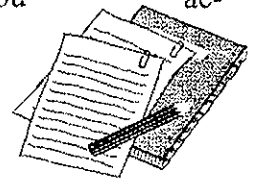
Take Notes

Author: Leisa Driesener - reprinted from *Bromeliaceae* Jan/Feb 2010

If you're very new to bromeliads, or have a small collection, you may not be too concerned about the exact names and details of each plant. But over time as your interest and collection expands, you might find it handy to have a record of what you have, and how they've grown and changed over time.

Here are some simple ideas to track your bromeliads:

- Rule up a cheap exercise book with columns for data such as genus, name, purchased date, amount, source, flowering date, number of pups, position in the garden, description etc.
- Organising your information onto separate pages or sections for each genus, eg *Neoregelia*, *Tillandsia* etc, makes it easier to locate the details for a particular plant, and to keep a growing collection organised.
- An (exercise book sized) address book with A-Z tabs can also be handy to provide organisation and separation of names alphabetically.
- Take (digital) photos of your broms to record when they're looking their best, flowering or having pups.
- If you've got an unknown plant, and want to get it identified, having a good picture of it in flower can be invaluable.
- Organise your brom photos on your PC into separate folders with one per month, eg 2010_Sep, 2010_Oct, etc or per year, so you can look back to see what the plant was like this time last year.
- Or keep a separate folder for each genus, and prefix the original filename of each picture with the name of the plant and the date of the picture (in year-month-day format), eg *Neo_Lila_090702_P2013602.JPG*, *Neo_Lila_091207_PB084002.JPG*. (Right-click on the file and select Rename, but remember to keep the file extension, eg .JPG)
- Sorting the files in a folder by filename will group all pictures for a given plant together and list them in date order.
- Compare pictures over time if you're moving plants around the garden or shade house or changing your potting mix etc, to see if you're getting better or worse results.
- Keep a logbook of your watering and fertilising regimen if you're aiming for the optimal results; used together with your pictures, you can readily see the results.
- Keep a wish list of plants, but don't forget to cross them off as you acquire them!





PLEASE HAVE YOUR ARTICLES TO ME
 NO LATER THAN 8TH MARCH 2012
 WHERE POSSIBLE COULD YOU PLEASE
 EMAIL THEM TO ME IN WORD FORMAT.
 MY EMAIL ADDRESS IS: brommad@optusnet.com.au
 PH: **0733883575**
 Alternate email address: jhenwood1@dodo.com.au

WHOLESALE BROMELIADS of AUSTRALIA, THE POCKET (near Mullumbimby)

Large range of bromeliads. Agents for Deroose, exotic plant of Belgium & Andrew Maly's **KIWI COLLECTION VRIESEAS**.

Visitors welcome by appointment. P.0266845374. F.0266845168.

email: plants@ausbroms.com.au

Website: www.ausbroms.com.au

BROMELIAD MEGA SALE

SATURDAY 4TH & SUNDAY 5TH FEBRUARY, 2012 ~ 7 A.M. – 3 P.M.

****1000'S TO CHOOSE FROM****

****LARGE COLLECTIONS ON SALE FROM SEVERAL GROWERS****

****RARE AND HIGHLY SOUGHT AFTER VARIETIES AVAILABLE****

****FULL SUN LANDSCAPING PLANTS TO SHADE LOVERS****

VRIESEAS, NEOREGELIAS, AECHMEAS, ALCANTAR-
 EAS, TILLANDSIAS, CRYPTANTHUS, BILLBERGIAS
 AND MORE

****TRUCK LOADS OF BARGAINS****
 MAL & MICHELLE CAMERON'S
 11 APOLLO COURT, VICTORIA POINT



GOLD COAST SUCCULENT AND BROMELIAD SOCIETY DISPLAY AT THE BRISBANE SHOW

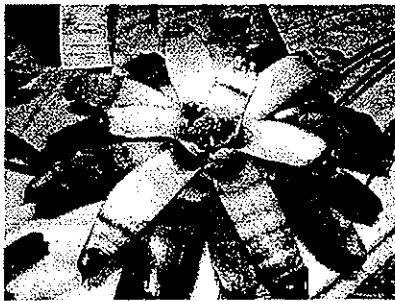
In November Greg and Narelle Aizlewood, Colin and Monica Mead and Neville Ryan volunteered to do the display at the Brisbane show. Greg and Narelle arrived with a van full of plants, Colin and Monica with a station wagon full and Neville with his tillandsia's (along with his expertise for setting up the display). The display when finished looked wonderful. The back row consisted mainly of flowering Guzmanias, Vrieseas and flowering Aechmeas. Large foliage Vrieseas provided a focal point with Neoregelias in the foreground. In the centre were Greg's lovely billbergia hybrids.

Our display received a Highly Commended award for our efforts!

Greg and Narelle received Highly Commended awards for Tessmannii Rubra, Neoregelia Megan and one of Greg's billbergias. Neville received a Highly Commended award for his tillandsias. Some outstanding neoregelias included in the display were Megan, High Voltage, Pink Debbie, Lime and Lava, Raspberry Ripple, Margaret and Shep.

The display had a good representation of different types of bromeliads. It is hoped that there will be volunteers to help when the next show is held in a few months time.

Monica Mead



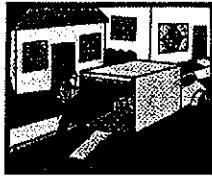
Young for Raspberry Ripple
114 South Brisbane Gardens St Brisbane QLD 4101 2012



Silbergl's Landkissung



Aechmea
tessmannii



MOVING SALE...

11th and 12th February

22 Dunsby Drive
 Boonaroo Park (off Nielsens Road)
 100's of Broms & Succulents
 Cuttings by request
 Marjorie Gale 5579 9234



GUIDELINES FOR BORROWING FROM THE LIBRARY

New members must be financial for three months before borrowing books.

1. Books are on loan for (1) month only.
2. Members are responsible for replacement of lost or damaged books.
3. Members are advised that the above guide lines are part of the by-laws approved by the members of the society.

Library and book sales open at 12.00 p.m. meeting days.

BOOKS FOR SALE

Bromeliads - A Cultural Manual \$5.00
 Bromeliad Cultivation Notes \$8.00
 Starting with Bromeliads \$25.00



We have a wide range of books and magazines available for you to borrow.
 Our friendly librarian Jennifer Laurie along with assistant librarian Jan

The aims of the society are:

- (A) To stimulate interest in the conservation, and to promote the culture and development of the succulents and bromeliads.*
- (B) To acquire and disseminate information regarding these plants and to encourage their production and propagation.*
- (C) To ban totally from our collection any such plants which become noxious.*
- (D) To enlighten members and the public on the dangers of cultivating certain noxious species.*
- (E) To give exhibitions, arrange field days, and other events, and to make such publications as are deemed desirable.*
- (F) To associate, affiliate or otherwise joint or connect ourselves with similar bodies or societies.*
- (G) To make seeds and plants available to members under the control of the Society.*
- (H) To foster family membership and members.*