

# BROMLINK



September/October 2000

**TABLE OF CONTENTS**

**Page**

**SPECIAL FEATURES**

Condolences . . . . . Page 4  
Displays . . . . . Page 5  
Field Day . . . . . Page 5  
Bus Trip . . . . . Page 5  
Subscriptions . . . . . Page 6  
Extra Special Raffle . . . . . Page 6  
Elections . . . . . Page 6  
The Note . . . . . Page 7  
UXB Alert or Plants from Interstate . . . . . Page 8

**REGULAR FEATURES**

Office Bearers . . . . . Page 1  
Deadlines for Bromlink and Email Address . . . . . Page 2  
Meeting Dates And Venue . . . . . Page 2  
Dates for Your Diary . . . . . Page 2  
President's Report for July/August 2000 . . . . . Page 3  
An Address for Mail . . . . . Page 9  
Brom Roots . . . . . Page 10  
Under the Mango Tree . . . . . Page 12  
Solution to July/August Puzzle . . . . . Page 22  
To Help Our Plant Sales People . . . . . Page 22  
!! Congratulations !! . . . . . Page 23  
Signing the Attendance Book . . . . . Page 23  
Suggestion Box . . . . . Page 23  
Find - A - Word . . . . . Page 24  
Plant Roster . . . . . Page 25  
Tea Roster . . . . . Page 25  
Plant of the Month . . . . . Page 26  
Visitors to our Area . . . . . Page 27  
Ordinary Raffle . . . . . Page 27  
Cent Auction . . . . . Page 27  
Olwen in the Garden . . . . . Page 27  
Lite Relief . . . . . Page 28  
Items for Sale . . . . . Page 29

**OFFICE BEARERS**

**PATRONESS**

PRESIDENT	<b>Olwen Ferris</b> Bobby Powell (Mrs)	5591 3296
IMMEDIATE PAST PRESIDENT	Mary Nicholson	5572 0993
VICE PRESIDENT	Graham Besgrove	3402 2502
SECRETARY	Mary Nicholson	
MINUTE SECRETARY	Narelle Aizlewood	
TREASURER	Mary Nicholson	
ASSISTANT TREASURER	Phyllis King	
EDITOR	Wendy Besgrove	
ASSISTANT EDITOR	Mary Nicholson	
HOSTESSES	Tesse & Graham White, Michelle Schmidt, Richard Bond	
COMMITTEE	Phyllis King, Denise Story, Graham Bullen, Don Smith, John Catlan, Nev Ryan	
PLANT SALES	Mac McAlister	
PLANT SALES ASSISTANTS	Betty Page, Heather Barker, Jan Browett, Pat Ross, Robert Noble	
GOODS SALES	Kathleen Henderson	
GOODS SALES ASSISTANT	Sue Levine	
LIBRARIAN	Jeanette Henwood	
ASSISTANT LIBRARIAN	Jennifer Laurie	
RAFFLES SUPERVISOR	Mick Levine	
ASSIST RAFFLE SUPERVISOR	Eddie Collas	
AUDITORS	Yong Gee Raftery & Co	
LIFE MEMBERS	Olwen Ferris, Rolly Reilly, Mary Nicholson, Graham and Wendy Besgrove, Genny Vauhkonen, John Catlan, Neville Ryan	
HONORARY MEMBERS	Roy Wenzel	

***Permission is granted to reprint articles appearing in the Bromlink, in whole or in part, ONLY when credit is given to the author and the Gold Coast Succulent and Bromeliad Society Inc.***

---

## DISCLAIMER

Opinions expressed in this newsletter are the contributor's own and are not necessarily those of the Committee or the Gold Coast Succulent and Bromeliad Society Inc.

---

## DEADLINES FOR BROMLINK AND EMAIL ADDRESS

The deadline for publication of items in the next Bromlink need to reach Wendy Besgrove or Mary Nicholson by Friday, 27<sup>th</sup> October 2000.

If you would prefer to email your articles, they can be sent to [bromgrove@powerup.com.au](mailto:bromgrove@powerup.com.au).

---

## MEETING DATES AND VENUE

Our meetings are held at the Uniting Church Hall, Elanora on the second Saturday of each month starting at 1.30 pm.

---



## DATES FOR YOUR DIARY



***PLEASE CHECK DIARY DATES AS THERE ARE ADDITIONS TO THIS LIST IN EVERY BROMLINK.***

DATE	EVENT
Saturday, 9 <sup>th</sup> September 2000	General Meeting and Cent Auction - Carnivorous Plants

DATE	EVENT
Saturday, 16 <sup>th</sup> September 2000	Tweed Heads Civic Centre
Saturday, 14 <sup>th</sup> October 2000	General Meeting - Begonias
Saturday, 28 <sup>th</sup> October 2000	Field Day - Jacobs Well
Thursday - Saturday, 2 <sup>nd</sup> - 4 <sup>th</sup> November 2000	Southport Park Shopping Centre
Saturday, 11 <sup>th</sup> November 2000	Annual General Meeting and General Meeting - Carnivorous Plants
Saturday, 25 <sup>th</sup> November 2000	Bus Trip - Mullumbimby and Billynudge
Saturday, 9 <sup>th</sup> December 2000	Christmas Party
January 2001	No meeting
Friday - Monday, 12 <sup>th</sup> - 15 <sup>th</sup> October 2001	11 <sup>th</sup> Australian Bromeliad Conference, Wollongong

## PRESIDENT'S REPORT FOR JULY/AUGUST 2000

It has been two very eventful months. The biggest excitement was our bus trip to see Grace Goode's garden "Bromania" at Alexander Headland. With the bus full, we made an early start and arrived at morning tea time. Everybody soon found themselves captivated in the many plants. A lot they hadn't seen before and the backyard a sea of colour with plants big and small. We had a rolling raffle and presented Grace with Guzmania Red Parrot grown by John Bolger and it was welcomed with opened arms by Grace. It now lives at the moment on her back verandah and goes in the lounge at night as the nights have been a little cold I'm told.

Talks at the meetings have been really interesting. Don Smith recently back from USA spoke on the Tundra, King Newman discussed uses of NEEM from drinking it as tea, dosing kids and goats and reducing viruses on crops and combined with Charlie Carp as a fertiliser on Bromeliads. Caution on washing hands after gardening as snails carry a parasite and the eggs, if swallowed by humans hatches out and can head for the brain and kill. It is hard to detect.

We had a very successful sale of plants at Tweed Mall made easy by the many willing helpers with lots of plants and a lot of members carrying the share of the load. Thank you everyone. (We had 8 plastic bags left over.)

Last meeting we gained seven new members. There seems to be a big surge in the interest on Bromeliads and I feel sorry for those who don't know about them because they don't know what they are missing. Please check on our events page for the shows etc that are coming up.

There are plants that have been around for many years. It really is very important that we keep our plants labelled and correctly named for "posterity sake". That might seem a funny thing to say but a Bromeliad lover in North Queensland bought a collection of Bromeliads from another collector who was elderly. Among these plants were Bromeliads thought to be no longer in existence not only in Australia but also in the USA and in the Bromeliad Cultivar Registry. So please keep this in mind.

---

## CONDOLENCES

Our deepest sympathy to Olwen, Margaret and Charlie on the death of their brother, Jack. Our thoughts and prayers are with them at this time.



## DISPLAYS

There is a display at Twin Towns Civic Centre on Saturday, 16<sup>th</sup> September. Don't forget that it will be daylight saving down there so the show begins at 7.00 am Queensland time.

On 2<sup>nd</sup> - 4<sup>th</sup> November there is a display at Southport Park Shopping Centre. Please have your plants ready to go.

Plastic shopping bags are needed URGENTLY.

---

## FIELD DAY

Our next Field Day is on Saturday, 28<sup>th</sup> October from 10.00 am at John and Genny's at Jacobs Well. You will need your own transport for the day. Don't forget to bring along your lunch, a chair, hat and, most important, insect repellent.



---

Don't forget to check the Dates for Your Diary so you don't miss anything.

---



## BUS TRIP

The next bus trip is not until November as the football finals are early this year then the Olympic Games. The Saturday, 25<sup>th</sup> November will be a trip to Mullumbimby to members Clarrie and Gloria's garden, then back to Billynudge for lunch at our member Kathleen's garden. The cost will be \$18.00. Lunch and a chair must be brought along. Tea and coffee will be supplied. There will be a raffle. Please pay Mary before the trip.

## SUBSCRIPTIONS

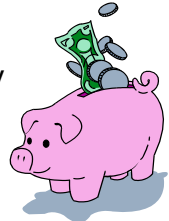
**Subscriptions are due at the October meeting.** If you have not paid by then, you are currently unfinancial. Please pay as soon as possible to stay financial.

Family - \$8.00

Single - \$6.00

If you require postage of your newsletters, please feel free to forward 6 (six) current-price stamps instead of a money order or cheque as they can be used to send out the Bromlink. For all postal members, please send your subscription to:

Subscription Secretary  
Gold Coast Succulent and Bromeliad Society  
c/- Graham Besgrove  
19 Ellington Street  
BROWNS PLAINS Q 4118



---

## EXTRA SPECIAL RAFFLE

There will be a Extra Special Raffle at the November, so don't miss out!!! The plants are not so easy to find hence the term "Special Raffle". This is another way in which your Society thanks you for the hard work you do for your club.

---

## ELECTIONS

Election of new office bearers will be held at the November meeting. Please consider what you can do to help the Society to achieve in the next twelve months.

---



## THE NOTE

Bobby Powell

This note was sent with a plant that was given to the person who was the “hybridiser”.

Hello, I’m back home at last and it is great to meet you. I’m not just any plant, you gave my Grandmother to Bob six years ago and she said she had a warm sunny spot and good life in Cairns. She told me about you and all your progeny, beautiful garden and now I can have a look for myself.

You made my family from *Aechmea weilbachii* and *Nidularium billbergioides* and called us x Nidmea Beacon. My name has been changed a bit. Don’t you hate it when they change stuff like that? First you have to get it into your old brain, change tags then try to remember it! *Nidularium billbergioides* has now been transferred to the *Canistropsis* genera so now I am x *Aechopsis* Beacon.

X *Aechopsis* sound like a Chinese meal! Add on Beacon and sounds like a bacon chop or something. Well, my dear, I do not look like a Chinese meal and I am going to send up a spike you will love. Remember it’s your love of Bromeliads that has found me back here where it all started with Granny.

In those books written by a butcher<sup>1</sup> and a beetle<sup>2</sup> it says we are no longer in cultivation. Well Lynn has a number of us and loves us too so we will not die out. Most of the family are in spike now. Just think of all the babies!

Don’t just stand there, unwrap me, pot me, show me your garden and all my relations! Oh gosh! I’m pregnant but I wasn’t sent home in disgrace, just sent home to Grace my baby will be a beauty. One day next year it will brighten your days with a lovely inflorescence and I will probably have two more babies! Just talk to me now and then and we will put up bright Beacons everywhere.

Your own,

x Aechopsis Beacon. 17/7/2000

---

- 1 Derek Butcher of South Australia "Checklist of Australian Bromeliad Cultivars and Hybrids"
  - 2 Don Beadle of Florida "The Bromeliad Cultivar Registry"
- 

## UXB ALERT OR PLANTS FROM INTERSTATE

Derek Butcher

### *Neoregelia* 'Golden King'

This has been on sale by the Olive Branch for some years now and is a variegated plant similar to a variegated *Neoregelia carolinae* but with a yellowish tinge giving it a somewhat unique look. It is not in the Bromeliad Cultivar Registry. An identical plant has also been circulating as *Neoregelia* 'Kathleen' and is a name that has been registered but bears no relationship to our plant. Therefore, if you have 'Kathleen' on the label please change it to 'Golden King'. I will be placing this on the Bromeliad Cultivar Registry with parents unknown and hybridist unknown until someone can tell me its history.

### *Neoregelia* 'Cockabell'

This is a hybrid accredited to Hummel and as is usual with this hybridist not only do we not know its parentage, we also don't know for certain what it looks like! The first formal description appears in the Bromeliad Cultivar Registry based on information in a Tropicflora Cargo Report and conflicting evidence based on an Australian connection, name Shane Zaghini's *Neoregelia* Book.

I got interested in this problem in early 1999 when Peter Franklin sent me a photograph of the Aussie 'Cockabell' pointing out the plant had red berries. The plant was large and suggested that *Neoregelia cruenta* was in the parentage somewhere. As far as I am aware the colour of ripe *Neoregelia* berries has always been white, so red is rather startling! So I started asking around. No comments were forthcoming.

In October 1999, I was removing offsets and a *Neoregelia* 'Calypso' obtained from Keith Golinski was next in line. Hey, this had red berries too! What are the chances of two separate hybrids having red berries? Zero, as far as I am concerned AND was I looking at the Aussie 'Cockabell'? Because of the doubt of the identity of the Aussie 'Cockabell' I am now shifting my attention to the 'Caribbean Sunset' grex which is *Neoregelia cruenta* 'Sun King' x 'Catherine Wilson'. Cultivars of the grex are 'Caribbean Sunset', 'Calypso', 'Coral Reef', 'Curacao', 'Montego Bay', 'Planters Punch', 'Port o' Call' and 'Sandy Cay'. If you have any of these plants, please check when flowering has finished to see if berries turn red at maturity. In the meantime, I would suggest you change the label on your Aussie 'Cockabell' to 'Calypso'. And if you have Shane Zaghini's *Neoregelia* Book, please make a note on page 18. Hummel's *Neoregelia* 'Cockabell' seems to be a *carolinae* type!

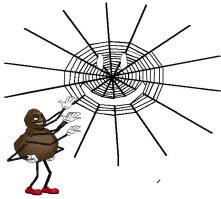
---

## AN ADDRESS FOR MAIL

If you would like to get in touch with the Society by mail, please address your correspondence to:

Mrs Mary Nicholson  
Secretary  
Gold Coast Succulent and Bromeliad Society Inc  
55 Dawn Parade  
MIAMI Q 4220





## BROM ROOTS

Brom Spider

### MIS-INFORMATION

Most bromeliad growers or collectors who have been growing these plants do not often take notice of plant tags for care purposes. These are just an overall view of what you should do, but, when it comes to the general public this is where it can and does strike terror into the very heart of the novice.

The one care note that really gets up my nose is the one that states these are air plants especially Tillandsias. As soon as the normal person reads this they have an immediate assumption THAT IS DOES NOT NEED TO BE WATERED!!!!!!! How wrong could they be. Just because these guys grow on trees and do not appear to hold water they still need to be misted or hosed just like a normal garden plant. I think if they were meant never to be showered, they would have a hump on their leaves like camels have so they can store water.

It's OK to tell people that these plants are easy to look after and that you do not have to water them as often as other plants but they always give this dumb surprised look of "Really, I didn't know that." A classic case of this is Tillandsia Usneoides (Spanish Moss or Grandfathers Beard). People often say to me that their bunch of this has died and when I asked them did they water it they usually say "But it is an air plant and you don't have to water it".

This is what I mean about mis-information. I think it is up to us to really inform the public and the novice growers how much or little watering is required of particular plants.

Not everyone's watering regime will be the same as someone else's. I know that Nev Ryan's watering regime is different to Graham Besgrove's which is different to John Catlan's. All you can do is advise and suggest different ideas and equations.

Just remember that areas that are 5 or 10 or 20 minutes away from each other can receive different rainfall. One area could be drier than the one just down the road. So please take this into consideration when someone asks about watering their plants.

Some tags don't even mention that you fill a bromeliad from the centre. All they say is that watering once a week is sufficient. Great, sounds fine but most people do not realise that there should be water in the central cup and leave axils.

It really is up to us as a Society and Members to inform the public about misleading information or lack of substantial info there is on this matter.

Anyway enough of my bantering until next time enjoy your showers.





## UNDER THE MANGO TREE

John Catlan

### CLARISSA AND CLARRIE PART II

Each morning the weight challenged Bongo left the depot they were cheered on their way by a cheer squad made up by their fellow workers. The reason the manufacturers called this vehicle a Bongo was a designer of bongo drums designed the two seats, and they were.

To begin with Clarissa had no idea of how a shovel worked. Clarrie had to show her how to use her seventeen stone to stomp the shovel into the ground around the power pole. Then Clarissa did not have the strength to get the shovel out of the ground, nor did Clarrie, so then it was up to Clarrie to dig her bogged shovel out. Life was not meant to be easy, as the Prime Minister of the day kept telling Clarrie.

Life has it's drawbacks and it's rewards. Clarissa had a sweet disposition and a sweeter voice you could never find. If the sirens had of had such sweet voices the Argonauts would have chucked Jason overboard and headed straight for the rocks. Clarrie noticed that if people really upset Clarissa, she lost her Dr Jekyll personality and developed her Mr Hyde's killer instinct that sounded a bit like a truckie with his fourth flat tyre for the day. Now Clarrie was thoroughly fed up with all the rate payers of the Shire lodging complaints with him, so he put Clarissa in charge of the complaints department. The complainees only ever tried to lodge the one complaint and the emphasis was on the tried. If the ultimate dream of all complaint departments is to the complainees to rack off, Clarissa would be their patron saint.

Even in the country, the people who lived in the real country and the people who lived in the country town had different standards. In the country as a team Clarissa and Clarrie were treated as equals and invited as equals into the farmhouses for a cup of tea and a slab of fruit cake. In the town, Clarrie copped an earful. You should be ashamed of yourself making that poor girl work like that. You should be ashamed of yourself standing around watching that poor girl work. You should be ashamed of yourself, you should be doing that not that poor girl. Shame, shame, shame. To make it worse, everyone of these confrontations ended in, "Come inside dearie, have a cuppa and a sticky bun". Clarrie in the meantime was left to finish off the power pole. Clarrie insists that in town Clarissa had more cups of tea than there were power poles and all he got was the bums rush.

Next month, further adventures of Clarissa, Clarrie and the Bongo.

NB - Don't forget our field day on Saturday, 25<sup>th</sup> November 2000.

First stop Hendo's cactus garden then on to Clarrie's place where you will find the biggest suspension bridge privately owned in the Southern Hemisphere. Also you will see the tallest heap of Bromeliads in the Southern Hemisphere.



### **DON'T SHOOT DEREK BUTCHER**

The moral integrity of the person who names a plant has to be accepted without qualification or you will never be able to create a system to record cultivar names. Any plant whose parentage is misnamed accidentally or intentionally is going to be fair game for the Dick (that plants parentage is misnamed) Tracys of the world with the emphasis on the fact Bromeliads are world wide.

## Consideration in and for the naming of plants

1. Be honest.
2. Make allowances for human nature (members and hybridists want names for plants).
3. Create a prestigious recording system (desirable to contribute to and use).
4. Avoid confusing the consumer (in dishonesty an element of confusion is helpful).
5. Communicate the existence of definable and indefinable characteristics (definable "cultivars" against the multitudes of indefinable grex).
6. A system must be consistent (record may be for today but also two hundred years hence).
7. Allow for the specialised requirements of ALL Bromeliads (what is satisfactory for Guzmanias etc, may not be satisfactory for ALL Bromeliads).
8. Record the duplication of names of a plant (nursery names, duplication etc, to avoid confusion).
9. Set future deadlines for improvements (Huddy's numbers for Vrieseas photos required, internet).
10. Ensure protection of the record by duplication.

No doubt orchid records stood in our shoes 150 years ago and they moved forward producing successful improvements. The internet is for the next worldwide generation and so are our records. Encyclopaedia Britannica may have just produced their last set of books. No, not because of bulk but cost. On the internet, better/more information and photographs can be supplied which can be updated at anytime.

The I.C.N.C.P. changed the rules in 1995 and we are now blessed with a near enough is good enough system for Bromeliads which the powers that be say we have to follow. Why? The powers that be agreed to it, so this is our new system. We can whinge about it, but as a group we have a new system.



### ***Abide by it and learn it!***

The orchid world is allowed to keep their better system simply because they presented their case to the I.C.N.C.P., the I.C.N.C.P. then OK'ed the orchid world's intention.

The reason why the system was changed was to simplify things. If you are going to simplify things to the point that they are useless, why bother.

Compared to the orchid world, the Bromeliad world is young (small), it is not as well organised (YET) or has the prestige pull (YET).

#### **The orchid/bromeliad world has a:**

1. Complicated, interesting and diverse family
2. Cut flower industry
3. Commercial nursery industry
4. Active amateur hobbyist
5. World wide clubs
6. Active and fragmented hybridising program
7. Industry is driven by amateurs
8. Landscaping application.

The Bromeliad world is on a much smaller scale than orchids because it's development intensity started 50 years ago against 200 for orchids. Bromeliad interest is growing and fast. The Bromeliad world has a plus that orchids do not possess - a commercial and home landscaping application that is growing so fast it's supply is a limiting factor. Bromeliads are not better landscaping subjects than orchids, just the flavour of the month.

#### **THE PROMOTION OF BROMELIADS**

1. Appearances in fashion shots
2. Appearances in home improvement shots

3. Indoor landscaping
4. Commercial landscaping
5. Gardening TV programs
6. Gardening magazines
7. Nursery stock
8. Gardening sections in chain stores (good shelf life).

All these give Bromeliads exposure and promote interest and therefore sales, Bromeliads having form and shape that is pleasing to humans.

Looking at the orchid industry, it is driven by amateurs. The commercial side is continually evaluating plants produced by amateurs with a view of acquiring material, or duplicating their efforts, so they can produce (small) commercial numbers to sell back to collectors.

Looking at the Bromeliad industry, it is driven by amateurs. The commercial industry is opting for nurseries to produce set lines. Perhaps a dozen varieties and feed this stock to nurseries, chain stores and landscapers. This is maximising their profitability by simplifying production and the increased use of tissue culture limits diversity. They too will have their eyes open for a plant produced by amateurs.

I believe that in the end Bromeliad nurseries will divide, those that produce commercial products for chain stores and landscaping, then there will develop small amateur driven commercial nurseries similar to the orchid nurseries of today, to supply the hobbyist and the home garden landscaping. The orchid nurseries supplying hobbyists are becoming fewer in numbers (per head of population) as declining profitability destroys their viability. What I think some of these will do is see Bromeliads as an addition to their catalogues in an effort to maintain profitability. These nurseries will rely heavily on new lines. Read this as a large selection of new hybrids, by amateurs.

The old register is a list of genetic traits.  
The new register is a list of visual traits.

The old rules included the use of grex names, that is, when all seedlings of a cross of (A) x (B) = Grex name. This name for the cross applies throughout the world forever more and a day where ever the cross is made or will be repeated. If the grex batch of seedlings produced a seedling that was thought to be exceptional, then it was given a cultivar name. I personally had a problem remembering which grex groups produced what cultivars, so I wrote out the tags as below and I learnt as I wrote out tags.

Neoregelia Grex Name 'Cultivar Name'
---

The grex name was used to cover the existence of very subtle difference that existed but difficult to describe, because no two plants raised from seed are truly identical. At some minute level there are graduations of differences (yes even in *species*) and it is these differences that make hybridising possible. The grex name was honest, allowed a grower to name all the seedlings, and avoided confusing the consumer.

The cultivar name was used when a hybridist produced a seedling that, although it had a grex name, the seedling had identifiable characteristics that the hybridist observed and that they believed deserved to be named. This cultivar name could only apply to plants produced by pups or tissue culture and if at any stage the plants produced this way did not accurately fit the cultivar description, the cultivar name should be dropped and the grex applied if no new cultivar name was required or given.

The new rules state, the use of grex is out and is replaced by cultivar groups which contain similar looking plants irrespective of their parentage.

1. Who makes these decisions (their level of competence)?
2. Under what growing conditions (England, Singapore or Hawaii)?

I believe that a contributor to misnamed plants are people looking at books and saying that looks like my plant. Another contributor to misnamed plants are growers who look at somebody else's plant and saying that is what I have (at home).

At the very core of nature is it's strive for survival, change. We cannot halt it, we cannot confine it, we can only try to guide it. In time all things change and this change is the only thing that is consistent.



Of every single Bromeliad pest,  
I think I hate Black Scale best.

John Catlan



### THE COLOUR IN NEOREGELIAS

- |                          |                 |
|--------------------------|-----------------|
| 1. Bract colour          | 7. Chlorophyll  |
| 2. Light blushing        | 8. Variegation  |
| 3. Temperature variation | 9. Finger nail  |
| 4. Sun tanning           | 10. Speckling   |
| 5. Ring spot             | 11. Fertiliser  |
| 6. Discolour syndrome    | 12. Blood water |

1. **Bract colour:** The centre of Neoregelias produce a flush of colour which begins with the initiation of flowering. The colour range from green, white and various shades of red

through to purple. With some *Neoregelias* the colour fades rapidly while others last for twelve months or more.

2. **Light blushing:** The top layer of cells in the foliage of plants of the *Neoregelia carolinae* complex and others have the ability to flush with colour. This flush of colour is governed by light intensity, day length and nitrogen levels.
3. **Temperature variation:** Especially during spring with fluctuating periods of temperature, *Neoregelias* such as *Neoregelia* 'Bob & Grace' and *Neoregelia* 'Lambert's Pride', the green banding is initiated. Increased fertiliser may increase the banding but there is a limit. What I believe happens is the discolour-syndrome layer of cells is laid down during its growth and as the growth exceeds the normal rate it leaves gaps in the colour. All these plants are subject to sun tanning.
4. **Sun tanning:** Is associated with the top layer of chlorophyll cells. The same as light blushing. The difference between light blushing which will fade in decreased light is that sun tanning is fixed. Once it happens, is there forever. The *Neoregelia* Charm, *Neoregelia* Gold Fever, *Neoregelia* 'Gespacho', *Neoregelia* Red Planet, etc are subject to sun tanning and hid the variation of colour in the lower layer of cells for ever, but if you turn the leaf over, you will find the spotting has not changed. In some *Neoregelia concentrica* hybrids you find sun tanning may affect 25cm to three-quarters of the leaf and is normally black and is fixed and is in the top layer of cells. On a dark night, shine a torch from the bottom of the leaf through the black sun tanning, you will find little green flecks, cells that did not tan. Also you can see ring spot in the lower layer of cells that the sun tanning has hidden. Sun tanning starts from the tip of the leaf and works down.

5. **Ring spot:** Is caused by evaporation of water from the meniscus of the cup water and droplets. The cooling effect of evaporation is so sudden that the cells on the leaf surface cannot cope and rupture. They then cease to function allowing sunlight to tan the lower layer of cells. This happens winter or summer, shade or bright conditions. It is the variation of temperature that begins the effect. Open conditions and low humidity in winter allows for more rapid cooling.
  
6. **Discolour syndrome:** In a dense forest, the foliage can restrict the light that reaches the forest floor so that it may be as low as one percent. In these low light areas, the majority of this light is red and plants with discolour foliage have developed this adaption to absorb the maximum of red light available. The green top layer absorbs the blue light, the red light is absorbed and reflected by the bottom layer of red cells. The light that is reflected back through the green cells gives these cells a second chance to absorb the light. When you see discolour Bromeliads you know they require low light.

With *Neoregelia Charm*, *Neoregelia Gold Fever*, *Neoregelia 'Gespacho'*, *Neoregelia Bobby Dazzler*, etc all have these red cells in the middle layer of cells. I believe they are an adaption to take advantage of low light. As this does not fit the meaning of discolour, I refer to it as discolour syndrome. These plants are green spotted and look better and perform better at lower light levels. All these plants have a safety factor against high light intensity. The top layer of cells are subject to sun tanning. In the red spotted layer of cells the colour is fixed and it doesn't matter how low the light level gets within reason, the colour remains.

7. **Chlorophyll:** Comes in various strengths from yellow in *Neoregelia Gold Fever* to green in *Neoregelia Charm*. The yellow chlorophyll allows the reds to have a clear iridescent

colour, while green chlorophyll darkens the red. Fertiliser will darken the chlorophyll cell and consequently darkens the red.

8. **Variegation:** These are stripes that run the length of the leaf and may be white, yellow, red and anything in between. I will leave anything that needs to be said for an article. The only comment is that *Neoregelias* that have the discolour syndrome that are variegated, the chlorophyll cells in the top layer turn white and the bottom layer stays red. Because the green disappears altogether, the red glows with a clarity that is stunning.
  
9. **Fingernail markings:** These red tips to the leaves are intriguing in very bright light. They darken in colour and in low light they glow. *Neoregelia spectabilis* that has these striking fingernail markings has a green centre. Why?  
  
I was told to attract birds that would pollinate the flowers and I believed them. Then I thought about it. The fingernail colour lasts from the beginning to the end of the plant. So for four to five years, birds visit this *Neoregelia spectabilis* in anticipation of a four week window of opportunity to obtain nectar. *Not a very cost effective pastime for birds.*
  
10. **Speckling:** *Neoregelia* Barbarian has very fine speck markings. These plants are subject to sun tanning but leaves the centre speckled.
  
11. **Fertiliser:** Very mild fertiliser stress will enhance colour. Too little fertiliser and any excessive stress, light, heat, cold or lack of humidity will damage plants. Too much fertiliser and green will be your favourite colour.
  
12. **Blood water:** If you tip the water out of some Bromeliads, you will find it tinged red. The explanation given is that

Neoregelia growers drip their blood into the Bromeliad cups in an effort to enhance the colour. I've tracked this Bromeliad myth down to a few Tillandsia, Guzmania and Vriesea growers who are jealous of the fact our Neoregelias are colourful through their life span while their silver or green plants have to flower before becoming interesting.



It's the end of another "Under the Mango Tree" and, God willing, you will hear from us next month.

John and Genny.

### **GOLD COAST**

On the Gold Coast streets the lawyers abound  
And on the shoreline the boats are found,  
Fly honesty fly to some safe retreat  
There's craft on the shore, and craft in the street.

John Catlan

---

### **SOLUTION TO JULY/AUGUST PUZZLE**

Try easy grown plants.

---

### **TO HELP OUR PLANT SALES PEOPLE**

From the April 1999 meeting, all must be set up and ready before the Plant Sales begin at **1.00 pm**. This is to allow the Sales people who help Mac to be better prepared for the rush. Thank you very much for your help in this matter.



## !! CONGRATULATIONS !!

Happy Birthday to Narelle Aizlewood, Christine Morgan Lowe, Mary Webb, Greg Aizlewood, John Catlan, Jan Browett, Lorraine Milletic, Mac McAlister, Tessie White.



Welcome to Carmen Burke, Peter Sargent, George and Ann Pay, Ron Conley, Ted Williams, Mary Webb, Pat Waldon, June Atkinson, Irene Brown and Jeanette Simpson

---

## SIGNING THE ATTENDANCE BOOK

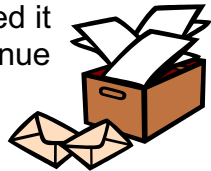


This is to ask everyone who attends the meetings to please sign the Attendance Book. If you don't sign the Attendance Book, then you will miss out on a Lucky Door Prize. Even visitors should sign the book as they also have an opportunity to win a prize. Please make sure you sign the book.

---

## SUGGESTION BOX

This box is to be used by the members to ask questions which will be answered at the next meeting or made into an article for the Bromlink. If everyone wrote a piece - short or long - about how they were hooked on to Bromeliads and placed it in this box, you would be helping our Bromlink continue to appeal to you. Or a piece on your favourite Bromeliad or some tip that works for you and you would like to pass on to your fellow growers. This will be of help to others too.



**FIND - A - WORD**

P	E	R	C	H	I	N	G	E	G	A	I	L	O	F
C	I	L	B	Y	Y	L	T	H	G	I	R	B	O	E
S	H	T	E	U	O	E	T	T	E	S	O	R	P	F
T	K	A	C	A	T	V	A	S	E	L	M	I	L	S
R	I	C	R	H	F	M	U	D	A	A	P	O	H	L
E	L	N	O	M	E	E	E	I	T	H	W	R	I	W
E	I	R	Y	R	R	R	R	I	Y	E	U	V	H	T
S	E	B	I	U	U	T	O	T	R	B	I	E	P	N
R	S	C	C	O	S	N	I	S	S	N	R	L	T	A
K	A	S	L	E	Q	C	S	E	G	E	A	I	S	I
O	B	O	R	S	U	H	V	N	H	N	O	Z	O	L
O	C	R	D	E	A	I	E	T	T	M	E	A	M	L
L	E	R	V	P	T	T	U	L	I	A	D	R	L	I
T	I	I	E	A	F	O	S	T	C	A	R	B	A	R
B	L	S	N	O	S	D	A	I	L	E	M	O	R	B

BROMELIADS are NATIVE to South East US to SOUTH AMERICA - most are from BRAZIL. Some are TERRESTRIAL, BUT many LIVE on ROCKS or are EPIPHYTIC, LIVING on TREES and SHRUBS, WHERE, with their BRILLIANT FLOWERS and SQUAT ROSETTE LEAF SHAPE, they LOOK like PERCHING BIRDS. OFTEN the CHARM of the PLANT LIES in the BRIGHTLY COLOURED BRACTS which ALMOST OBSCURE the TINY flowers. Some bromeliads have a VASE or PITCHER like FOLIAGE FORMATION.

**Find the CAPITALISED and UNDERLINED words.**

*(Mary kindly provides these interesting puzzles to help us learn and keep us entertained. If you have any problems finding the words, Mary will be able to help you out.)*

## PLANT ROSTER

We are now operating a roster to share the responsibility of bringing in plants for the Lucky Door Prize and the Special Raffle. If anyone other than the people rostered for that month would like to donate a plant, please feel free to do so. The plants do not have to be succulents or bromeliads. The Lucky Door Prize is drawn first and has the pick from the table followed by the Special Raffle with a choice of the plants available.

<b>SEPTEMBER</b>	Sue Burbury, Jill Gordon, Moya Howell, Phyllis King
<b>OCTOBER</b>	Greg Aizlewood, Dawn Collas, Diana Hughes, Betty Page
<b>NOVEMBER</b>	Lorraine Miletic, Heather Barker, Mary Nicholson, Gloria Morrow

If you are unable to attend the meeting, either get the plant to someone to take it in for you or swap with someone else.



## TEA ROSTER



Members who are asked to help on the Tea Roster have been asking what it entails.

You just have to see that the cups and saucers are all set up and the tea, coffee, sugar and biscuits are all out. If there are not enough cups and saucers, please see Mary. You will find out how many people are at the meeting by the register at the front door.

At the Tea/Coffee Break, help in the kitchen to see that everyone has been attended to, then help to clear the kitchen afterwards.

You are only on the roster one day each year. We, the members, could not do without your assistance. It is a very necessary, thirst quenching break when so much else is being done.

<b>SEPTEMBER</b>	Monica Bailey, Ollie Willows, Rita Simms, Wendy Besgrove
<b>OCTOBER</b>	Diana Hughes, Margaret Tate, Judy Norton, Margo Murphy
<b>NOVEMBER</b>	Tessie White, Sue Burbury, Gloria Morrow, Jennifer Laurie

### PLANT OF THE MONTH

For Plant of the Month, could you please bring in some plants from the nominated genera for that month. Remember that the plant doesn't necessarily have to be in flower, we also grow Bromeliads for their foliage. This segment of our meeting is to help us to learn to identify the different genera and perhaps see the diversity within that genera. The genera for the coming months are:

<b>SEPTEMBER</b>	Perfumed-flowered plant - with or without bloom
<b>OCTOBER</b>	Vrieseas
<b>NOVEMBER</b>	Not often seen Bromeliads and/or Succulents

## VISITORS TO OUR AREA

If anyone is visiting our area and would like to come to a meeting, please feel free to do so. If you need directions to the hall, there are phone numbers in the front of Bromlink where you can get help. It is very easy to find the hall from either the Gold Coast Highway or the Pacific Highway.



If your visit does not fall at a meeting, maybe you would like to see some gardens where the bromeliads grow so well.

---

## ORDINARY RAFFLE

This is one way of making money for the Society. It is up to all of us to help by bringing in some plant/s when we have extra ones. It doesn't have to be a bromeliad, just something you would like to win yourself. Let us see if we can make it a good continuous raffle.

---

## CENT AUCTION

It is wonderful how much fun can be had at our Cent Auction every March, June and September. Remember to bring in some plants that can be placed in the groups for the auction. The money raised goes to help build up our Library.

***Please remember not to throw all your tickets into the lots but retain the No. 1 ticket for the draw.***

---

## OLWEN IN THE GARDEN

When she retired from the Bromeliad Display Garden at Paradise Point, Olwen Ferris wrote a book on her life with plants. This is now in print. If anyone would like to buy a copy at \$15.00 each, please see or contact Olwen.

---

## LITE RELIEF

### THREE HUNTERS

One day, three friends go hunting. Only one is very good, so the second two plan to watch him. They arrive at the hunting cabin, and get all set up. The next day, the first hunter goes out. He returns with a big deer. The second two guys ask him how he did that. They can't believe how big the deer is.

"It was easy. Found the tracks, followed the tracks, BAM shot the deer."

The next day, the second hunter goes out, and comes back with an even bigger deer. The third guy's eyes bug out when he sees it, and he asks him how he did it.

"Same thing the first guy did. Found the tracks, followed the tracks, BAM shot the deer."

So on the third day, the last guy goes out to hunt. He doesn't come back for a very long time. When he staggers into the cabin, rifle gone, all beat up and bruised, with only one boot, the other two are very surprised. They ask him what happened.

"Well...I found the tracks, followed the tracks...BAM got run over by a train."

## ITEMS FOR SALE

### PLEASE NOTE

**POTS** 105 mm squat pot 20c ] Limited supplies of pots are  
125 mm 25c ] available for sale at the  
140 mm 30c ] meetings. If you require large  
165 mm 45c ] quantities of pots, please  
200 mm 65c ] phone Bobby Powell and she  
will bring them to the meeting  
for you.

**NUTRICOTE** 500g \$2.50

**LABELS** Regular: 10 for 35c 100 for \$3.50  
Larger: 5c each 10 for 50c

**PENCILS** \$2.20 each

**PLANT LADDERS** 5c

**PLANT HANGERS** 10c

**SALES STICKERS** 5¢ each or 10 for 50¢

**PADDLE POP STICKS** 50 for 25¢

**SOCIETY BADGES** \$3.00 each  
Available from the Treasurer

**BOOKS** "Bromeliads for Everyone" by Bea Hanson - \$3.50  
"Bromeliads - A Guide to the Beautiful Neoregelias -  
\$20.00  
"Growing Bromeliads" - \$12.00  
"Bromeliads for Modern Living" - \$8.50  
"Bromeliads Next Generation - \$30.00

The objects of the Society shall be:

- (a) To stimulate interest in the conservation, and to promote the culture and development of succulents and bromeliads.
- (b) To acquire and disseminate information regarding these plants, and to encourage their production and propagation.
- (c) To ban totally from our collection any such plants which become noxious.
- (d) To enlighten members and the public on the dangers of cultivating certain noxious species.
- (e) To give exhibitions, arrange field days, and other events, and to make such publications as are deemed desirable.
- (f) To associate, affiliate or otherwise joint or connect ourselves with similar bodies or societies.
- (g) To make seeds and plants available to members under the control of the Society.
- (h) To foster family membership and members.