

BROMLINK



January/February 1998

TABLE OF CONTENTS

Page

SPECIAL FEATURES

Congratulations and Celebrations	Page 5
Get Well Soon.	Page 5
Plants for Sale	Page 11
Statement of Income and Expenditure	Page 12
Balance Sheet	Page 13
Condolences	Page 13
Brom Roots	Page 14

REGULAR FEATURES

Office Bearers	Page 1
Meeting Dates And Venue	Page 2
Dates for Your Diary.	Page 2
President's Report for November & December 1997.	Page 3
Under the Mango Tree	Page 6
!! Congratulations !!.	Page 11
Plant Roster.	Page 16
Visitors to our Area.	Page 16
Tea Roster	Page 17
Monthly Plant Talks	Page 17
Olwen in the Garden.	Page 17
Plant of the Month	Page 17
Find - A - Word.	Page 18
Solution to November/December Puzzle	Page 19
Subscriptions.	Page 19
An Address for Mail	Page 19
Name Tags	Page 20
Who Am I? Or Help!!!	Page 20
Ordinary Raffle	Page 20
Cent Auction.	Page 20
Items for Sale	Page 21

OFFICE BEARERS

PATRONESS

Olwen Ferris

PRESIDENT	Bobby Powell (Mrs)
IMMEDIATE PAST PRESIDENT	Mary Nicholson 5572 0993
VICE PRESIDENT	Graham Besgrove (07) 3800 5431
SECRETARY	Mary Nicholson
MINUTE SECRETARY	Narelle Aizlewood
TREASURER	Mary Nicholson
EDITOR	Wendy Besgrove
ASSISTANT EDITOR	Mary Nicholson
HOSTESS	Sue Levine
COMMITTEE	Graeme Bullen, Neville Ryan, John Catlan, Don Smith, Jenny Vauhkonen, Mac McAlister, Dawn Collas, Olwen Ferris
PLANT SALES	Mac McAlister
PLANT SALES ASSISTANTS	Betty Page, Fiona Mortimer, Heather Barker, Jan Browett, Denise Story
GOODS SALES	Eddie Collas
GOODS SALES ASSISTANTS	Sylvia Wotherspoon, Cheryl Archer
LIBRARIAN	Jeanette Henwood
ASSISTANT LIBRARIAN	Dawn Collas
RAFFLES SUPERVISOR	Roy Wenzel & Mick Levine
AUDITORS	Yong Gee Raftery & Co
LIFE MEMBERS	Olwen Ferris, Rolly Reilly, Mary Nicholson, Graham and Wendy Besgrove, Genny Vauhkonen, John Catlan
HONORARY MEMBERS	Jum Daniels, Roy Wenzel

Permission is granted to reprint articles appearing in the Bromlink, in whole or in part, when credit is given to the author and the Gold Coast Succulent and Bromeliad Society Inc.

MEETING DATES AND VENUE

Our meetings are held at the Uniting Church Hall, Elanora on the second Saturday of each month starting at 1.30 pm.



DATES FOR YOUR DIARY



DATE	EVENT
Saturday, 14 th February	General Meeting
Saturday, 14 th March	General Meeting and Cent Auction
April	No meeting due to Easter
Saturday, 9 th May	General Meeting

Committee Members:

Committee meetings are held at 1.00 pm on the day of Society meetings.

DISCLAIMER

Opinions expressed in this newsletter are the contributor's own and are not necessarily those of the Committee or the Gold Coast Succulent and Bromeliad Society Inc.

PRESIDENT'S REPORT FOR NOVEMBER & DECEMBER 1997

NOVEMBER

There were 42 members and two visitors at the November meeting and eight apologies. Members were reminded that the next meeting was our Christmas Party and everyone was asked to bring a plant, a plate and a present. We had our Annual General Meeting and positions were filled.

I would like to thank all those who brought plants along for the Special Raffle. Also, thank you to Neville who exceeded himself - just where do you find them, Neville - and to John and Genny.

To anyone who needs a reminder, subscriptions are due now.

Plants on the Show and Tell and Plant of the Month Tables were:

Acantostachys strobilaceae, *pitcairnoidies*
Catopsis sessiliflora
Dyckia remotaflora
Fosterella rusbyii, *schidosperma*
Neoregelia mcwilliamsii, *pineliana*, *carolinae marechallii*, Sunday
Best, Barbarian, Amethyst Queen variegata
Tillandsia ionantha, *xiphoides*, *albertiana* hybrid, *butzii*, *bulbosa*,
juncea, *cacticola*, *streptophylla*, *utriculata*, *stricta* (white)

Plants for the Special Raffle were:

Canistrum siedeleanum
Guzmania danielii x peacockii, *vulcan x gloriosa*, *squarossa*,
lingulata variegata, *wittmakii* red, Denise, Ruby
Neoregelia meyendorffii albo marginata, *tricolor*, Caroline Super
Select, Skotak hybrid Anna #47 and #26, Maggies Pride,
Red Star
Tillandsia butzii, *kautskii*, *pueblensis*, *fasciculata*, *nidus*, *extensa*

Vriesea splendens x glutinosa, viminalis rex, imperialis rubra, saundersii x bituminosa variegata, Belgische Hybrid, Red Chestnut

DECEMBER

There were 46 members and three visitors at the December meeting. The meeting was told of the passing of our bright chirpy member, Bob Thomas. It was very nice to see Edna had joined us for the meeting. On a happier note, we then gave an orchid to Olwen Ferris and wished her a Happy Birthday for her 80th the Thursday before. The Christmas Party takes a very relaxed atmosphere from our meetings - eat, drink, meet and talk with those you need to catch up with before the New Year. A very new member from Gatton said how enjoyable she found the afternoon.

I wish you all a very good health and wealthy New Year with many new Bromeliads to add to your collections to brighten up not just your life, but all those that look in the garden and are enlightened.

Plants for Show and Tell and Plant of the Month were:

Aechmea contracta, zebrina, cuculatta (Pink and Orange)

Billbergia De Nada

Canistrum siedelianum, perplexum, Big Emma

Catopsis subulata, floribunda

Dyckia Yellow Glow

Guzmania lingulata, sanguinea (fortuna), Rana, Candy Glow, Remembrance

Neoregelia eleutheropetala x pendula, Aussie Dreams "Tartan Princess", Odean Head, Green Apple, Golden Delicious, Orange Glow

Orthophytum vagans, vagans variegata, dysjunktum, gherkenii var warren loosii

Pitcairnia undulata

Tillandsia roezlii, makoyana, streptophylla, ferrisiana, concolor, hondurensis, streptophylla x concolor, brachycaulos, stricta x meridionalis, capitata rubra, lorentziana, disticha, tenuifolia v saxicola, contracta, brachycaulos x seleriana, bandensis

Vriesea splendens junco x glutinosa, saunderiana, Perfecta, Splendide, fosteriana “Speckles” Imp Brazil, Bob and Grace, *Poelmanii* White line, Tiffany, Francor’s Spae, Raemaur Flame

Wittrockia paradoxa

CONGRATULATIONS AND CELEBRATIONS

Our Patron and Life Member, Olwen Ferris, celebrated her 80th Birthday in December. We all wish her many happy returns of the day. She also joins the exclusive Octogenarian Club with many of our other distinguished members. Congratulations, Olwen. We hope you had a wonderful day.



We would like to wish Jum and Marie Daniels a speedy recovery. They have both had a stay in hospital but are both on the mend. Hope to see you up and about soon.



UNDER THE MANGO TREE

John Catlan

There were four of us, preteens killing time during the Christmas holidays. We found ourselves at the entrance of the Bentonite Mine. Rail tracks led into the blackness and being kids we took a dozen short steps walking on the sleepers down into the mine. Out in the hot December sun it wasn't at all scary, but down in the mine, the cold air raising goose bumps on our arms and legs, it was a different matter.

You could see nothing ahead after every couple of steps you just had to turn and stare at the square of light, nothing was said but none of us had any intention of chickening out. It was as black as the devil's heart down there. We were down to whispering to each other. A blood curdling scream from Ralph, he'd set off a rat trap and it was clamped onto his bare toes. He would have been OK except he'd scared the living daylights out of his three mates and the silly sod was blocking the exit. He was trampled into the floor in our rush towards the light. We shot out of the entrance like corks and were about a hundred yards into the scrub before we'd stopped.

Outside, we were bug-eyed staring back into the black hole. A few tentative calls for Ralph and he emerged clutching the rat trap, bits of skin missing from being trampled but otherwise OK. To survive the experience and emerge clutching the rat trap must have taken determination. Whatever Ralph is doing today I'm sure he is successful at it.

~~~~~000OOO000~~~~~

*Pitcairnia graffii*. On the phone to Derek the other day complaining our *Pitcairnia graffii* develops yellow edges to the leaves each winter but other than that grows quite well, he said his did exactly the same - must be a characteristic. A pup potted up just prior to winter and fertilised did not



develop the yellow edges to as a marked degree as the parent. The yellow edge has a tendency to green up in spring.

Summer is here to watch your plants as the sun changes position. They may scorch.

**Guzmanias** will require that bit of extra shade until we reach next autumn. Fertilise lightly over the next few months. *Guzmania lingulata* group is about the only *Guzmanias* found at low altitudes. The rest come from higher up where the nights are cool. Last year on hot days I watered the *Guzmanias* morning and just on dark

**Neoregelias** are coming into the peak of their display. Pups removed now and potted up should be given a bit of extra shade until they strike then into more light. This will help to stop premature flowering. The pups taken now will have a full twelve months to develop into mature plants.

**Pitcairnia - Pepinias** - do not let them dry out. Shade will help and does not hurt these plants and helps to keep them moist. I use an oversize pit and this helps.

**Nidulariums** will be flowering over the next couple of months. They like a shady position and respond to a very light fertiliser program.

**Aechmeas** - Winter is not their favourite season. They love summer and respond positively to a balanced fertiliser program and good light. Shift them now to maximise your coming growing and flowering season.



*Deuterocohnia brevifolia*. Every time I turn around it seems Derek is pointing out where I have plants misnamed. His contention is most of the *Deuterocohnia brevifolia* we have are keying out to *Deuterocohnia lorentziana*. Although he has keyed out one plant to *Deuterocohnia brevifolia* and I managed to get a piece of it. Now I can sit back and wait

until it flowers then check out the differences. I will admit that the flowering of all these plants so far seems to be identical in time and appearance.

I have a *Deuterocohnia lorentziana* that threw a pup that is albo marginated. It is one small pup on one large branch and in the next year is going to be the time to divide it up. So this year starting now I am going to divide up all my other *Deuterocohnia lorentziana* as a practice run to see if my theory of big pieces is the way to go because when I try small pieces, it is 99% losses. I haven't the guts to use the Neville Ryan *Deuterocohnia lorentziana* propagation method which is growing all your plants along the driveway where they were looking absolutely fantastic growing in full winter sun and sun up until midday in summer. Then you have to back the car over them, pick up all the pieces and repot them.

Don't laugh. He caught the edge of the pots with the side of the car tyre and really knocked them about. But when he picked up the big pieces and repotted them into individual pots they just kept growing. Nobody would have known what happened. They are looking fantastic and flourishing. I think Neville's large pieces is the way to success.

Now *Deuterocohnia lorentziana albo marginata* needs a name. So we now have *Deuterocohnia lorentziana* "Dinky Derek".

~~~~~oooOOOooo~~~~~

With thanks to Mrs Clare Ross, Your Garden, September 1997, page 97 for the inspiration.

Ode to the Yellow Handle

It's hard to find your gardening tools
Sometimes you just can't find them
The reason for this problem is
Your wife has gone and lost them

But don't get mad and stamp around
You know that she has had them
The answer's simple - ask her
She'll know where you have left them

John Catlan

~~~~~oooOOOooo~~~~~

*Hohenbergia membranostrobilus*. This is a very nice plant. The shape is that of a *Billbergia*. Lightly banded with black bands in the style of *Aechmea orlandiana*, small pink scape bracts with yellow bracts and flowers that a long lasting and arranged similarly to *Hohenbergia stellata*. It is a small plant.

You guessed it, Derek reckons this plant is misnamed and he doesn't know what it is, so the plant is now in limbo. We crossed *Quesnelia edmundoi* (Yellow bract) onto it and we have about a hundred plants. They are a brilliant batch of seedlings - green to red and the redder seedlings have bands. Some are shiny like *Quesnelia edmundoi* and as cute as cute could be. We expect the first flowering in the summer of 1999. They carry the name Hoque Nifty Neville.

~~~~~oooOOOooo~~~~~

One of our member's bull mastiff had to have a face lift - too many wrinkles which obscured the vision. The bull mastiff is back home now and looks as good as new with the new set of perfect wrinkles.

I can assure you this is not a lovie-dovie name for the spouse - but is a dog (four legged type).

~~~~~oooOOOooo~~~~~

*Billbergia viridiflora* (Wendland 1854) Out of all the Billbergias this seems to have a few eccentricities. It likes to be grown under shadier conditions than normal Billbergias. When I first grew this, I was getting a 20cm inflorescence with about 8 to 12 iridescent green flowers. I have increased the fertiliser and am now getting about a 35cm inflorescence with 24 flowers. After the first flower buds from the rest take about a month to finish developing. The number of buds that develop to maturity are related to what the particular plant can carry then the rest abort. I may be optimistic but looking at this plant now I feel the inflorescence could be doubled in size..

This plant will set seed by itself, but with a little help all the flowers will set and the seed pods remind you of Jaffas. They are round shiny, bright orange and last for months.



**Hechtia.** We have just flowered the most fantastic Hechtia or should I say the most fantastic Hechtia has flowered for us. I now firmly believe that every one should have Hechtias in their collection. I can see the look on your faces, just like a postman when the proud owner of a blue heeler is reassuring him that Muffy is really a beautiful little scrumptious softy and there's Muffy all teeth and tits with a smile like a chain saw blade wagging her tail saying, "Trust me, sucker".

No. It's not like that you can trust me. It is very delicate. The buds are lilac and the flowers are a delicate pale lilac and it is multi-branched. Looking up the plant in Bromeliads by Rauh, page 381, it is described as hermaphrodite meaning it has both male and female flowers on the same plant. *Hechtia tillandsioides* (Andre 1889) (LB Smith 1951) is completely spineless and looks just like a strappy Tillandsia. It is beautiful and much more delicate than the line drawing indicates. Our original plant came from Mary our President.

I have *Hechtia marnier-lapostollei* in flower. With this plant you have male plants and female plants. I wonder if you crossed *Hechtia tillandsioides* with *Hechtia marnier-lapostollei* whether some of the seedlings would be spineless. At least that possibility would be answered in the short term by examining the seedlings. The size and vigour of *Hechtia marnier-lapostollei* would make a nice spineless looking plant. Then there would be the possibility of the variation in flower colour as *Hechtia marnier-lapostollei* is white. Interesting.

~~~~~oooOOOooo~~~~~

God willing you will hear from us next issue.

The test of a truly intelligent person is
the degree to which they agree with you.

!! CONGRATULATIONS !!

Happy Birthday to Irene Small, Betty Page, Jeanette Henwood, Athol Nicholson, Mary Nicholson, Gloria Morrow, Peter Ludowici, Gill Dumble, Graeme Bullen and David Byster.



Welcome to Helena Gibbs, Zera Merritt, Joan Yess and Keith Robinson

PLANTS FOR SALE

If you are interested in buying some cacti and succulents, please phone Lyn Thompson on (07) 5593 0787.

**STATEMENT OF INCOME AND EXPENDITURE
FOR THE YEAR ENDED 30TH SEPTEMBER 1997**

| INCOME | 1997 |
|------------------------|-----------------|
| Bank Interest | 24.39 |
| Commission Plant Sales | 631.00 |
| Donations Received | 112.00 |
| Membership | 357.50 |
| Misc Income | 45.50 |
| Raffles | 1,145.75 |
| Seed Bank | 14.00 |
| Trading Table | 655.81 |
| TOTAL INCOME | 2,985.95 |

| EXPENDITURE | |
|------------------------|-----------------|
| Audit Fee | 175.00 |
| Bank Charges | 22.02 |
| Donation | 25.00 |
| Hire | 314.00 |
| Insurance | 125.00 |
| Office Administration | 497.81 |
| Postage and Stationery | 83.40 |
| Raffle Costs | 300.00 |
| Refreshments | 68.50 |
| Subscriptions | 93.70 |
| Trading Purchases | 643.16 |
| TOTAL EXPENSES | 2,347.59 |

NET PROFIT / (LOSS) 638.36

BALANCE SHEET

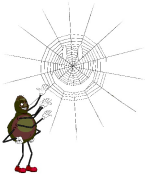
AS AT 30TH SEPTEMBER 1997

| | |
|---------------------------------|-----------------|
| ASSETS | 1996 |
| Bank Account | 2,263.24 |
| Books | 577.00 |
| Floats | 40.00 |
| Furniture | 502.00 |
| Journals (@ valuation) | 1,000.00 |
| Library Books (@ valuation) | 2,000.00 |
| Petty Cash | 30.85 |
| Sundry Assets | 527.65 |
| TOTAL ASSETS | 6,940.74 |
| LIABILITIES | 0.00 |
| NET ASSETS | 6,904.74 |
| REPRESENTED BY: | |
| ACCUMULATED FUNDS | |
| Balance at Beginning of Year | 6,302.38 |
| Surplus / (Deficiency) for Year | 638.36 |
| TOTAL ACCUMULATED FUNDS | 6,940.74 |

CONDOLENCES

We regret to inform you of the passing of our late member Bob Thomas in early December. Our thoughts and wishes are with you, Edna, and your family.





BROM ROOTS

Brom Spider

Everyone knows the pleasure of watching a plant grow and bloom. But have you every considered the joy of catching your seed and either growing it yourself, giving it to someone else to grow or giving it to the Seed Bank? What I am endeavouring to do is to just give you a few basic collection tips.

Vrieseas and Tillandsias:

After these have flowered they may set seed after you have done some pollinating or they are self-seeders. From where the flowers were, a hard three sided dark green pod appears. The seed for the above two genera have furry appendages attached to the seed like a dandelion and they are white too! The best way to capture the seed before it escapes is to cover them first. Cut away any of the inflorescence which does not contain a pod but do not, I repeat, do not cut the inflorescence from the plant. Place a piece of stocking over the inflorescence with the pods on and tie off with a garden tie. Be patient. It could take up to 12 months for your pods to mature as is the case with *Tillandsia ionantha*. But other pods can take as little as four months as with *Tillandsia scheidiana*.

The beauty about using stocking compared to a paper bag is that you can still water your plants without destroying the seed collector. As the pods mature, they will change colour from a green to green-brown and then a brown colour.

When the pods burst open, the seed will not be blown away but will be tapped inside the stocking. Now it is time to cut off the inflorescence, making sure you name the seed and date it so you know when it was harvested.

You can then grow it yourself or do with it as you please. If you find collecting them is too much trouble, you can chew on your Tillandsia seeds as they make great chewing gum!

Aechmeas and Billbergias:

When these babies have flowered you won't see a seed pod as like a Vriesea or Tillandsia. What you will see are berries. That's right, berries. You won't have to worry about catching the seeds before they fly away because these plants will keep them snug and safe inside a little jelly capsule.

With Aechmeas, the time for seed collection comes after a change in colour in the berry. A lot of Aechmeas' berries turn to a very dark or vibrant blue. This is the signal it is now time for you know what. Not all the berries will contain seed, only the coloured ones. Pinch these from the plant and lay down some newspaper or paper towels preferably on a flat surface and squeeze the berry from the opposite end to which came from the inflorescence.

The seeds will come out from the end of the berry covered in jelly. You can spread the seeds out on the paper and getting rid of the jelly by either:

1. Rolling them over the paper; or
2. Putting some water in a jar, placing the seeds and jelly in the jar and then put the lid on and think you are making your favourite cocktail by shaking it.

This will separate the jelly and seeds. All that is left to be done is put the seed on paper and let them dry before placing them in an *unsealed* envelope with name and collection date.

The same method applies for Billbergias except their berries won't change colour but swell up larger than when it had a flower there. Just follow the above procedure for cleaning and you're on your way again.

PLANT ROSTER

We are now operating a roster to share the responsibility of bringing in plants for the Lucky Door Prize and the Special Raffle. If anyone other than the people rostered for that month would like to donate a plant, please feel free to do so. The plants do not have to be succulents or bromeliads. The Lucky Door Prize is drawn first and has the pick from the table followed by the Special Raffle with a choice of the plants available.

| | |
|-----------------|--|
| FEBRUARY | Neil Ross, Lorraine Miletic, Kerry Merritt, Diana Hughes |
| MARCH | Patricia Zimmerman, Graeme Bullen, Tessie White, Mick Levine |

If you are unable to attend the meeting, either get the plant to someone to take it in for you or swap with someone else.

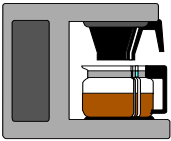
VISITORS TO OUR AREA

If anyone is visiting our area and would like to come to a meeting, please feel free to do so. If you need directions to the hall, there are phone numbers in the front of Bromlink where you can get help.

It is very easy to find the hall from either the Gold Coast Highway or the Pacific Highway.

If your visit does not fall at a meeting, maybe you would like to see some gardens where the bromeliads grow so well.





TEA ROSTER



| | |
|-----------------|---|
| FEBRUARY | Neil Ross, Denise Storey, Lorraine Miletic, Kerry Merritt |
| MARCH | Patricia Zimmerman, Graeme Bullen, Tessie White, Peter Ludowici |

MONTHLY PLANT TALKS

| | |
|-----------------|---|
| FEBRUARY | Narelle Aizlewood, Bobby Powell, Neville Ryan |
| FEBRUARY | John Catlan, Olwen Ferris, Mary Nicholson |

OLWEN IN THE GARDEN

When she retired from the Bromeliad Display Garden at Paradise Point, Olwen Ferris wrote a book on her life with plants. This is now in print. If anyone would like to buy a copy at \$15.00 each, please see or contact Olwen.

PLANT OF THE MONTH

For Plant of the Month, could you please bring in some plants from the nominated genera for that month. Remember that the plant doesn't necessarily have to be in flower, we also grow Bromeliads for their foliage. This segment of our meeting is to help us to learn to identify the different genera and perhaps see the diversity within that genera. The genera for the coming months are:

| | |
|-----------------|------------------|
| FEBRUARY | Cryptanthus |
| MARCH | Foliage Vrieseas |
| MAY | Aechmeas |

FIND - A - WORD

| | | | | | | | | | | | | | | |
|---|---|---|---|---|---|---|---|---|---|---|---|---|---|---|
| G | E | W | P | C | S | U | O | L | O | C | I | X | A | S |
| R | P | I | O | E | T | S | R | I | F | E | W | N | O | M |
| O | I | N | S | N | A | M | E | R | I | C | A | M | O | M |
| W | P | T | I | T | H | E | O | C | T | V | E | R | O | E |
| A | H | E | T | R | S | R | E | W | O | L | F | S | T | R |
| N | Y | R | I | A | B | U | N | D | A | N | T | S | I | A |
| I | T | C | O | L | O | M | B | I | A | Y | D | N | L | I |
| T | I | E | N | A | S | B | R | A | Z | I | L | E | L | N |
| N | C | Y | S | T | O | T | C | G | N | I | E | B | A | R |
| E | G | E | N | U | S | O | S | H | A | D | Y | U | N | I |
| G | A | P | P | E | A | R | W | I | T | H | M | R | D | A |
| R | D | O | R | M | A | N | T | D | O | W | N | O | S | C |
| A | G | R | A | S | S | L | I | K | E | M | E | R | I | T |
| H | E | T | E | R | O | P | H | Y | L | L | A | T | A | I |
| T | B | Y | X | Y | L | A | C | O | H | T | N | A | X | P |

PITCARNIA

THE GENUS PITCAIRNIA is the SECOND most ABUNDANT, the FIRST BEING TILLANDSIA. They GROW FROM CENTRAL AMERICA DOWN to ARGENTINA, but mostly in Peru, COLOMBIA and BRAZIL. MOST of the plants are GRASS-LIKE. They grow mainly as TERRESTRIAL or SAXICOLOUS WITH a FEW EPIPHYTIC. Some lose their leaves during their DORMANT period of WINTER. They leaves APPEAR again after the FLOWERS in spring. They like MOIST SHADY POSITIONS. SOME are HETEROPHYLLA, ATRORUBENS, flammae and XANTHOCALYX.

(Find the CAPITALISED words)

SOLUTION TO NOVEMBER/DECEMBER PUZZLE

Delicately formed plant

SUBSCRIPTIONS

Subscriptions were due at the October meeting. If you have not paid, you are currently unfinancial. Please pay as soon as possible to stay financial.

Family - \$6.00

Single - \$4.00

If you require postage of your newsletters, please forward 6 (six) current-price stamps. For all postal members, please send your subscription to:

Subscription Secretary
Gold Coast Succulent and Bromeliad Society
c/- Graham Besgrove
19 Ellington Street
BROWNS PLAINS Q 4118

AN ADDRESS FOR MAIL

If you would like to get in touch with the Society by mail, please address your correspondence to:



Mrs Mary Nicholson
Secretary
Gold Coast Succulent and Bromeliad Society Inc
55 Dawn Parade
MIAMI Q 4220

NAME TAGS

If you have a name tag, will you please wear it to the meetings. Wearing a name tag makes for a more informal meeting which is what we are striving to offer.

WHO AM I? OR HELP!!!



Don't forget, anyone who has a mature plant or one in flower but doesn't know its name, our panel of experts are here to help identify it for you.

Or if you have a plant that you are not happy with the way it is growing, bring it in and our panel will help with ideas on what you can do different.

ORDINARY RAFFLE

This is one way of making money for the Society. It is up to all of us to help by bringing in some plant/s when we have extra ones. It doesn't have to be a bromeliad, just something you would like to win yourself. Let us see if we can make it a good continuous raffle.

CENT AUCTION

It is wonderful how much fun can be had by our Cent Auction every March, June and September. Remember to bring in some plants that can be placed in the groups for the auction. The money raised goes to help build up our Library.

Please remember not to throw all your tickets into the lots but retain the No. 1 ticket for the draw.

ITEMS FOR SALE

| | | |
|-------------|------------------|-----|
| POTS | 105 mm squat pot | 20c |
| | 125 mm | 25c |
| | 140 mm | 30c |
| | 165 mm | 45c |
| | 200 mm | 65c |

NUTRICOTE 500g \$2.50

LABELS Regular: 10 for 35c 100 for \$3.50
 Larger: 5c each 10 for 50c

PENCILS \$2.20 each

PLANT LADDERS 25c

PLANT HANGERS 25c

SALES STICKERS 5¢ each or 10 for 50¢

SOCIETY BADGES \$3.00 each
 Available from the Treasurer

BOOKS

"Bromeliads for Everyone" by Bea Hanson - \$3.50

"Growing Bromeliads" - \$12.00

"Bromeliads for Modern Living" - \$8.50

"Bromeliads - A Guide to the Beautiful Neoregelias" - \$20.00

The objects of the Society shall be:

- (a) To stimulate interest in the conservation, and to promote the culture and development of succulents and bromeliads
- (b) To acquire and disseminate information regarding these plants, and to encourage their production and propagation.
- (c) To ban totally from our collection any such plants which become noxious.
- (d) To enlighten members and the public on the dangers of cultivating certain noxious species.
- (e) To give exhibitions, arrange field days, and other events, and to make such publications as are deemed desirable.
- (f) To associate, affiliate or otherwise joint or connect ourselves with similar bodies or societies.
- (g) To make seeds and plants available to members under the control of the Society.
- (h) To foster family membership and members.